

2

1

B


B



A

A

PROPRIETARY AND CONFIDENTIAL
 THE INFORMATION CONTAINED IN THIS DRAWING IS THE SOLE PROPERTY OF GYPSUM MANAGEMENT & SUPPLY. ANY REPRODUCTION IN PART OR AS A WHOLE WITHOUT THE WRITTEN PERMISSION OF GYPSUM MANAGEMENT AND SUPPLY IS PROHIBITED.

| | | | | | |
|-------------|---------|---|-----------|------|------|
| | | UNLESS OTHERWISE SPECIFIED: | | NAME | DATE |
| | | DIMENSIONS ARE IN INCHES | DRAWN | GMR | 3/15 |
| | | TOLERANCES: | CHECKED | | |
| | | TWO PLACE DECIMAL ±0.01 | ENG APPR. | | |
| | | THREE PLACE DECIMAL ±0.001 | MFG APPR. | | |
| | | | Q.A. | | |
| | | | COMMENTS: | | |
| | |  | | | |
| | | MATERIAL | Various | | |
| | | FINISH | Various | | |
| NEXT ASSY | USED ON | | | | |
| APPLICATION | | DO NOT SCALE DRAWING | | | |

| | | |
|-----------------------|--------------|---------------|
| TITLE: | | |
| <h1>Drywall Cart</h1> | | |
| SIZE | DWG. NO. | REV |
| A | Drywall_Cart | 1 |
| SCALE: 1:32 | WEIGHT: | SHEET 1 OF 46 |

2

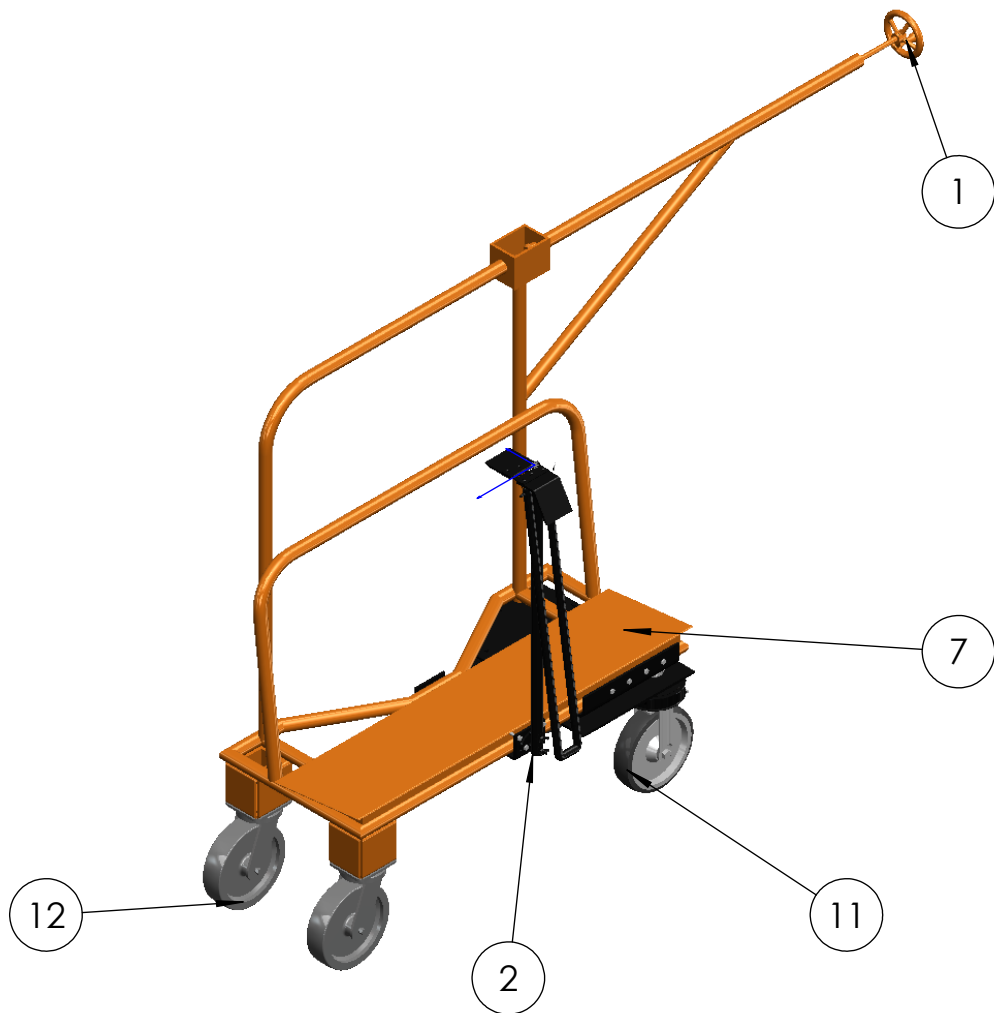
1

2

1

B

B



| ITEM NO. | PART NUMBER | DESCRIPTION | QTY. |
|----------|--------------------|---|------|
| 1 | Cart Steering | | 1 |
| 2 | Kickstand Assembly | | 1 |
| 3 | 92965A544 | Black-Oxide Grade 5 Steel Hex Head Screws | 8 |
| 4 | 95462A029 | Medium-Strength Steel Hex Nut | 8 |
| 5 | 90630A110 | High-Strength Steel Nylon-Insert Locknut | 6 |
| 6 | 91257A550 | Zinc Yellow-Chromate Plated Hex Head Screw | 6 |
| 7 | Hager_Assem_rev2 | | 1 |
| 8 | 2291N102 | Tapered-Roller Thrust Bearing | 2 |
| 9 | Rod | | 2 |
| 10 | 6435K18 | Clamping Shaft Collar | 2 |
| 11 | 2498T56 | Easy-Turn Caster with 4-5/8" x 3-3/4" Plate | 2 |
| 12 | 30305T74 | Samson Caster with 4-1/2" x 4" Mounting Plate | 2 |

A

A

| | | | | |
|-------------|---------|-----------------------------|-----------|------|
| | | UNLESS OTHERWISE SPECIFIED: | NAME | DATE |
| | | DIMENSIONS ARE IN INCHES | DRAWN | GMR |
| | | TOLERANCES: | CHECKED | 3/15 |
| | | TWO PLACE DECIMAL ±0.01 | ENG APPR. | |
| | | THREE PLACE DECIMAL ±0.001 | MFG APPR. | |
| | | | Q.A. | |
| | | | COMMENTS: | |
| | | MATERIAL | Various | |
| | | FINISH | Various | |
| NEXT ASSY | USED ON | | | |
| APPLICATION | | DO NOT SCALE DRAWING | | |

| | | |
|-----------------------|--------------|---------------|
| TITLE: | | |
| <h1>Drywall Cart</h1> | | |
| SIZE | DWG. NO. | REV |
| A | Drywall_Cart | 1 |
| SCALE: 1:32 | | WEIGHT: |
| | | SHEET 2 OF 46 |

PROPRIETARY AND CONFIDENTIAL
 THE INFORMATION CONTAINED IN THIS DRAWING IS THE SOLE PROPERTY OF GYPSUM MANAGEMENT & SUPPLY. ANY REPRODUCTION IN PART OR AS A WHOLE WITHOUT THE WRITTEN PERMISSION OF GYPSUM MANAGEMENT & SUPPLY IS PROHIBITED.

2

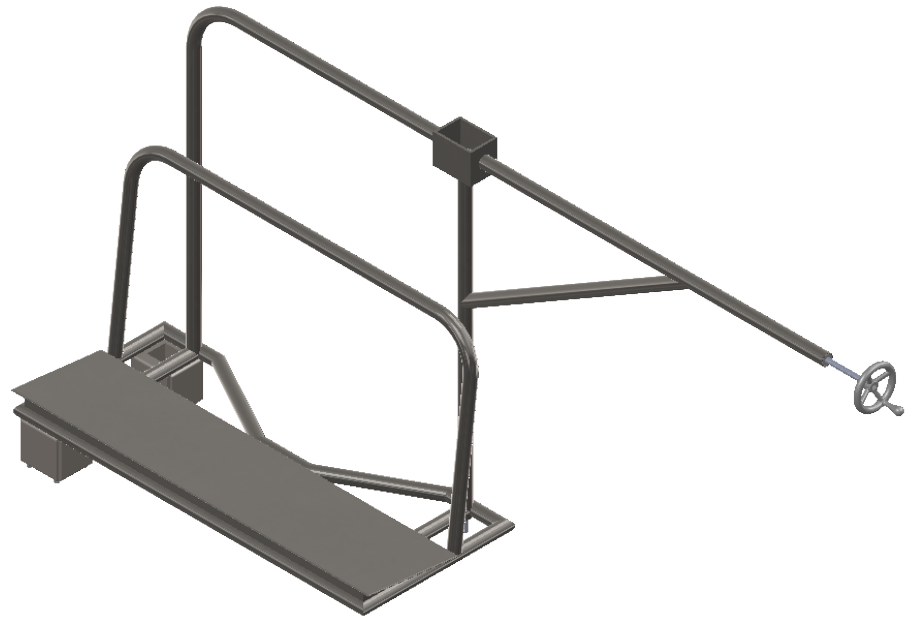
1

2

1

B

B



| ITEM NO. | PART NUMBER | DESCRIPTION | QTY. |
|----------|-------------------------------------|--|------|
| 1 | Vertical Gear Pin | | 1 |
| 2 | Vertical Shaft | | 1 |
| 3 | 6010N13_High-Power Metal Bevel Gear | High-Power Metal Bevel Gear | 1 |
| 4 | Shaft Pin | | 2 |
| 5 | 9414T11 | Set Screw Shaft Collar | 8 |
| 6 | 6383K34 | Ball Bearing | 4 |
| 7 | Horizontal Gear Pin | | 1 |
| 8 | 6010N12 | High-Power Metal Bevel Pinion | 1 |
| 9 | Horizontal Shaft | | 1 |
| 10 | 6033K71 | Zinc Unthreaded-Hole Spoked Hand Wheel | 1 |
| 11 | Base | | 1 |
| 12 | Spacer | | 2 |
| 13 | 92620A541 | Zinc Yellow-Chromate Plated Hex Head Screw | 8 |
| 14 | 95462A029 | Medium-Strength Steel Hex Nut | 8 |

A

A

PROPRIETARY AND CONFIDENTIAL
 THE INFORMATION CONTAINED IN THIS DRAWING IS THE SOLE PROPERTY OF GYPSUM MANAGEMENT & SUPPLY. ANY REPRODUCTION IN PART OR AS A WHOLE WITHOUT THE WRITTEN PERMISSION OF GYPSUM MANAGEMENT & SUPPLY IS PROHIBITED.

| | | | | | |
|-------------|---------|-----------------------------|-----------|------|------|
| | | UNLESS OTHERWISE SPECIFIED: | | NAME | DATE |
| | | DIMENSIONS ARE IN INCHES | DRAWN | GMR | 3/15 |
| | | TOLERANCES: | CHECKED | | |
| | | TWO PLACE DECIMAL ±0.01 | ENG APPR. | | |
| | | THREE PLACE DECIMAL ±0.001 | MFG APPR. | | |
| | | | Q.A. | | |
| | | MATERIAL: Various | COMMENTS: | | |
| NEXT ASSY | USED ON | FINISH: Various | | | |
| APPLICATION | | DO NOT SCALE DRAWING | | | |

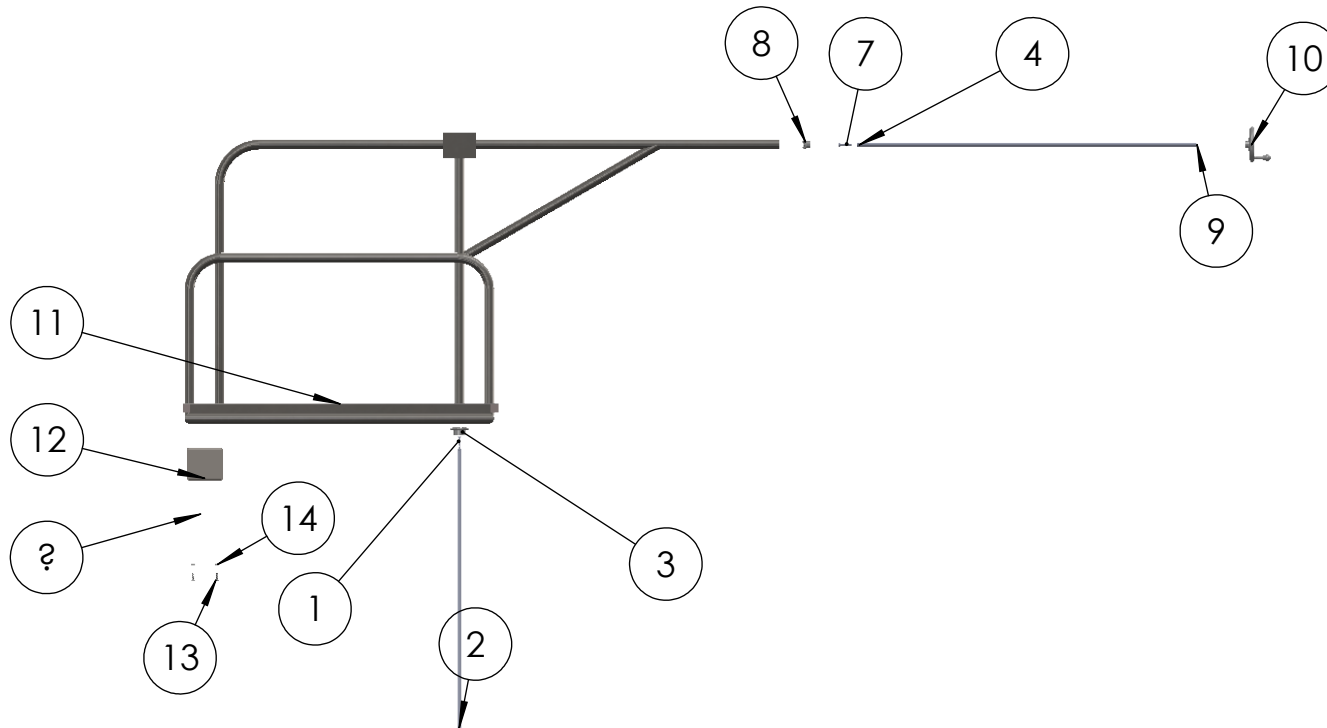
| | | |
|------------------------|--------------|---------------|
| TITLE: | | |
| <h1>Cart Steering</h1> | | |
| SIZE | DWG. NO. | REV |
| A | Drywall_Cart | 1 |
| SCALE: 1:24 | | WEIGHT: |
| | | SHEET 3 OF 46 |

2

1

B

B



A

A

PROPRIETARY AND CONFIDENTIAL
 THE INFORMATION CONTAINED IN THIS DRAWING IS THE SOLE PROPERTY OF GYPSUM MANAGEMENT & SUPPLY. ANY REPRODUCTION IN PART OR AS A WHOLE WITHOUT THE WRITTEN PERMISSION OF GYPSUM MANAGEMENT & SUPPLY IS PROHIBITED.

| | | | | | | | | |
|-----------|-------------|-----------------------------|-----------|------|------|---|--------------|---------------|
| | | UNLESS OTHERWISE SPECIFIED: | | NAME | DATE | TITLE: Cart Steering Exploded | | |
| | | DIMENSIONS ARE IN INCHES | DRAWN | GMR | 3/15 | | | |
| | | TOLERANCES: | CHECKED | | | | | |
| | | TWO PLACE DECIMAL ±0.01 | ENG APPR. | | | | | |
| | | THREE PLACE DECIMAL ±0.001 | MFG APPR. | | | | | |
| | | MATERIAL | Q.A. | | | SIZE | DWG. NO. | REV |
| | | FINISH | COMMENTS: | | | A | Drywall_Cart | 1 |
| NEXT ASSY | USED ON | | | | | SCALE: 1:24 WEIGHT: | | SHEET 4 OF 46 |
| | APPLICATION | DO NOT SCALE DRAWING | | | | | | |

2

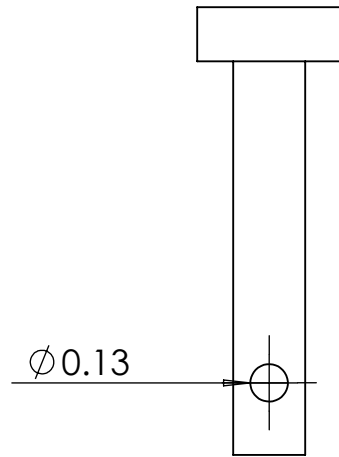
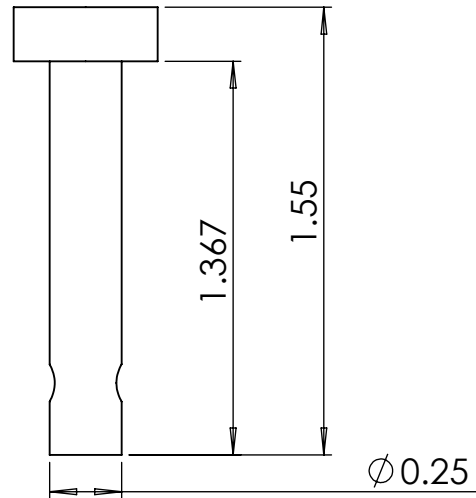
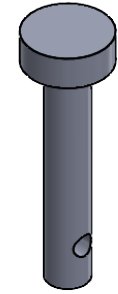
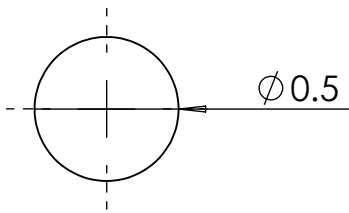
1

2

1

B

B



A

A

PROPRIETARY AND CONFIDENTIAL
 THE INFORMATION CONTAINED IN THIS DRAWING IS THE SOLE PROPERTY OF GYPSUM MANAGEMENT & SUPPLY. ANY REPRODUCTION IN PART OR AS A WHOLE WITHOUT THE WRITTEN PERMISSION OF GYPSUM MANAGEMENT & SUPPLY IS PROHIBITED.

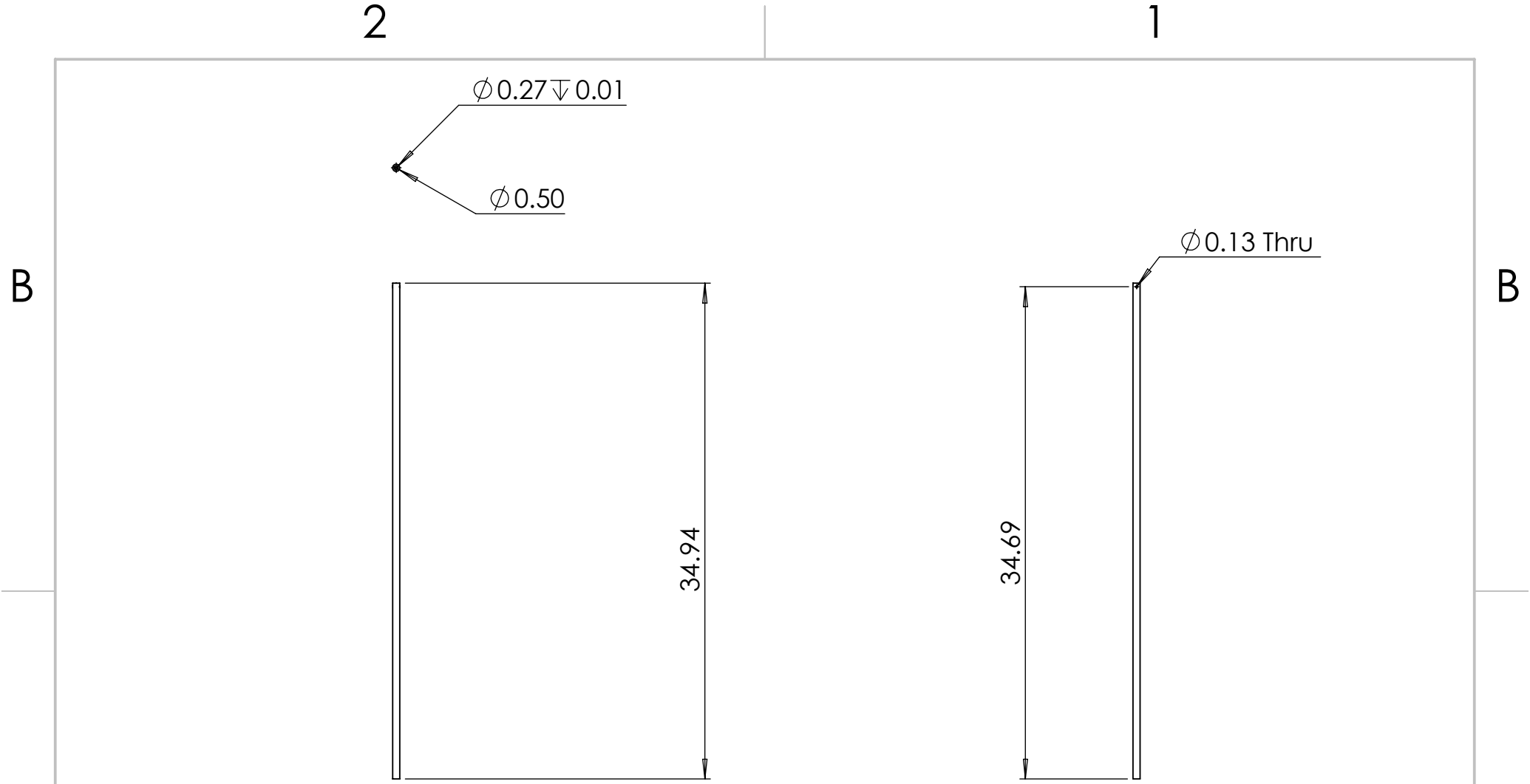
| | | | | | |
|-------------|---------|---------------------------------|-------------------|------|------|
| | | UNLESS OTHERWISE SPECIFIED: | | NAME | DATE |
| | | DIMENSIONS ARE IN INCHES | DRAWN | GEB | 3/15 |
| | | TOLERANCES: | CHECKED | | |
| | | TWO PLACE DECIMAL ± 0.01 | ENG APPR. | | |
| | | THREE PLACE DECIMAL ± 0.001 | MFG APPR. | | |
| | | | Q.A. | | |
| | | | COMMENTS: | | |
| | | MATERIAL | 1020 Carbon Steel | | |
| | | FINISH | Machined | | |
| NEXT ASSY | USED ON | | | | |
| APPLICATION | | DO NOT SCALE DRAWING | | | |

TITLE:
Vertical Gear Pin

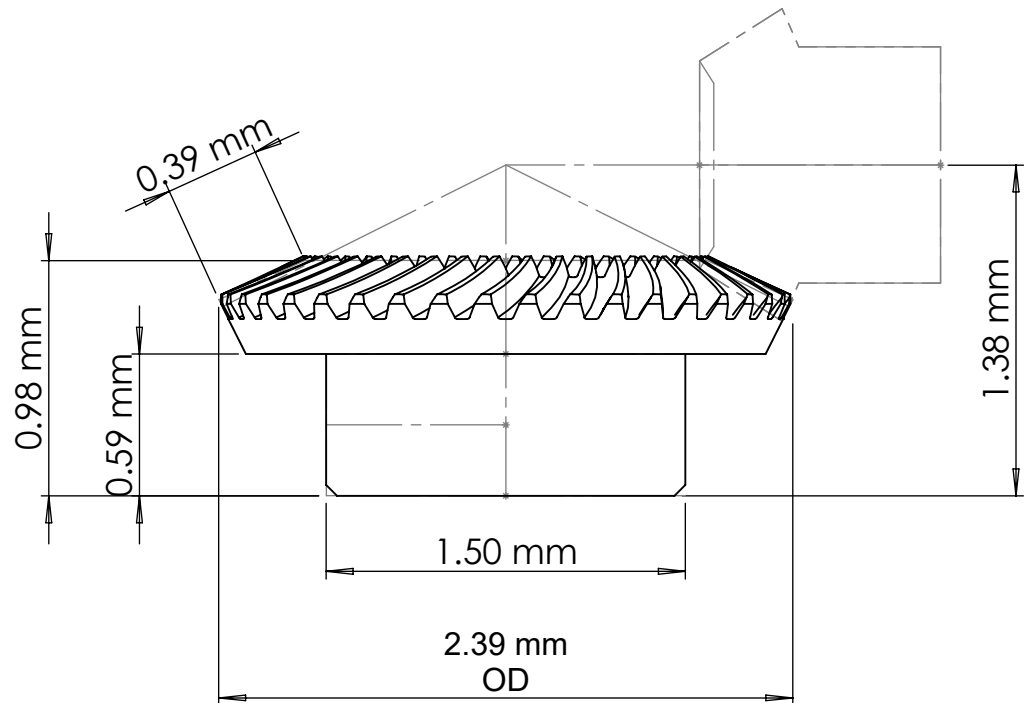
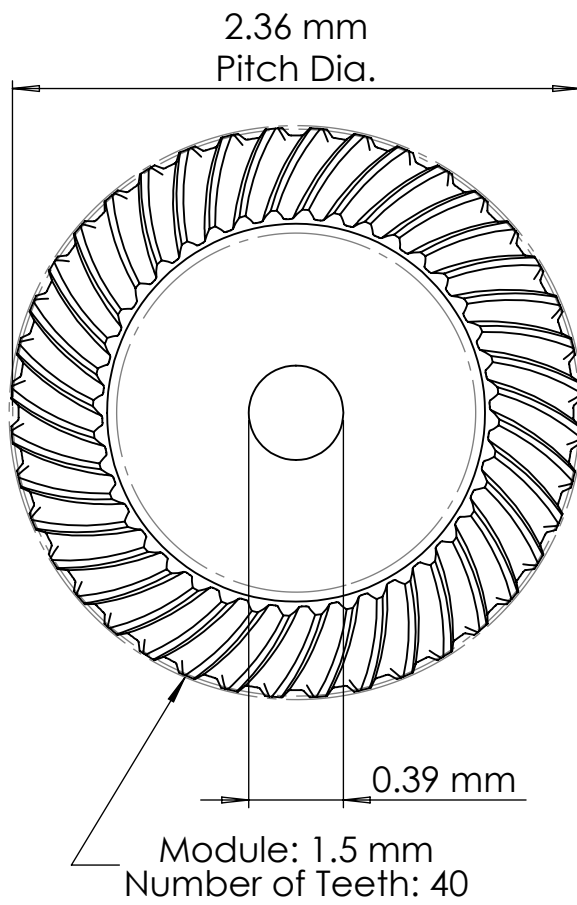
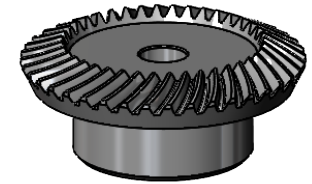
| | | |
|------------|--------------|---------------|
| SIZE | DWG. NO. | REV |
| A | Drywall_Cart | 1 |
| SCALE: 2:1 | WEIGHT: | SHEET 5 OF 46 |

2

1



| | | | | | | | | |
|--|---------|----------------------|---------------------------------|-----------|-------------|----------|--|---------------|
| <p>PROPRIETARY AND CONFIDENTIAL</p> <p>THE INFORMATION CONTAINED IN THIS DRAWING IS THE SOLE PROPERTY OF GYPSUM MANAGEMENT & SUPPLY. ANY REPRODUCTION IN PART OR AS A WHOLE WITHOUT THE WRITTEN PERMISSION OF GYPSUM MANAGEMENT & SUPPLY IS PROHIBITED.</p> | | | UNLESS OTHERWISE SPECIFIED: | | NAME | DATE | <p>TITLE:</p> <h1 style="margin: 0;">Vertical Shaft</h1> | |
| | | | DIMENSIONS ARE IN INCHES | DRAWN | GEB | 3/15 | | |
| | | | TOLERANCES: | CHECKED | | | | |
| | | | TWO PLACE DECIMAL ± 0.01 | ENG APPR. | | | | |
| | | | THREE PLACE DECIMAL ± 0.001 | MFG APPR. | | | | |
| | | | Q.A. | | | | | |
| | | | COMMENTS: | | | | | |
| | | MATERIAL | 1020 Carbon Steel | | | SIZE | DWG. NO. | REV |
| | | FINISH | Machined | | | A | Drywall_Cart | 1 |
| NEXT ASSY | USED ON | APPLICATION | | | SCALE: 1:12 | | WEIGHT: | SHEET 6 OF 46 |
| | | DO NOT SCALE DRAWING | | | | | | |



McMASTER-CARR 

PART
NUMBER

Default

<http://www.mcmaster.com>

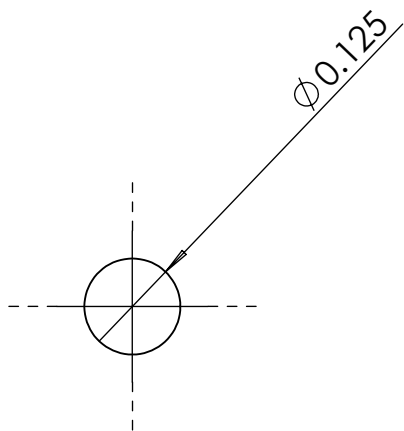
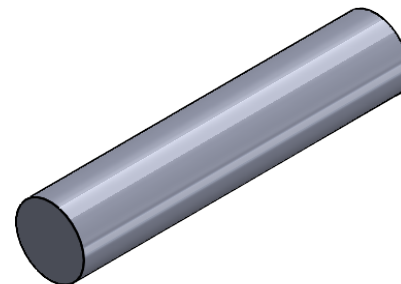
Information in this drawing is provided for reference only.

2

1

B

B



A

A

PROPRIETARY AND CONFIDENTIAL
 THE INFORMATION CONTAINED IN THIS DRAWING IS THE SOLE PROPERTY OF GYPSUM MANAGEMENT & SUPPLY. ANY REPRODUCTION IN PART OR AS A WHOLE WITHOUT THE WRITTEN PERMISSION OF GYPSUM MANAGEMENT & SUPPLY IS PROHIBITED.

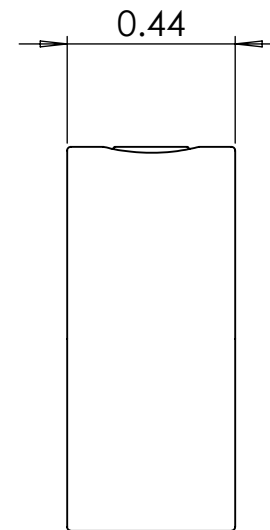
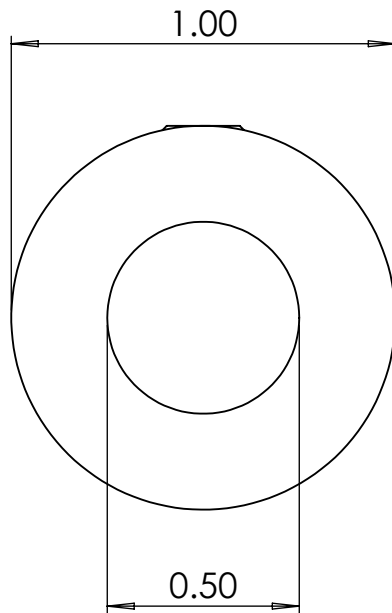
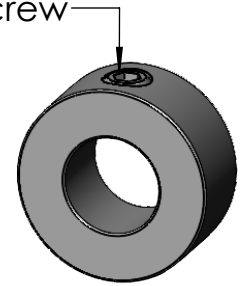
| | | | | | |
|-------------|---------|-----------------------------|-----------|------|------|
| | | UNLESS OTHERWISE SPECIFIED: | | NAME | DATE |
| | | DIMENSIONS ARE IN INCHES | DRAWN | GEB | 3/15 |
| | | TOLERANCES: | CHECKED | | |
| | | TWO PLACE DECIMAL ±0.01 | ENG APPR. | | |
| | | THREE PLACE DECIMAL ±0.001 | MFG APPR. | | |
| | | | Q.A. | | |
| | | | COMMENTS: | | |
| | | MATERIAL | | | |
| | | 1020 Carbon Steel | | | |
| | | FINISH | | | |
| | | Machined | | | |
| NEXT ASSY | USED ON | | | | |
| APPLICATION | | DO NOT SCALE DRAWING | | | |

| | | | |
|--------------------|--------------|---------------|--|
| TITLE: | | | |
| <h1>Shaft Pin</h1> | | | |
| SIZE | DWG. NO. | REV | |
| A | Drywall_Cart | 1 | |
| SCALE: 4:1 | WEIGHT: | SHEET 8 OF 46 | |

2

1

1/4"-20 x 1/4" Set Screw



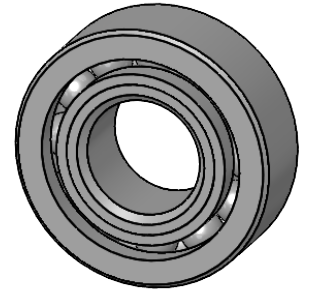
McMASTER-CARR 

<http://www.mcmaster.com>

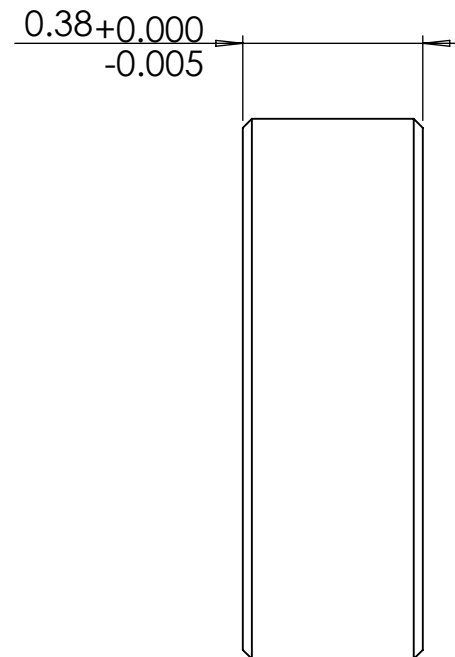
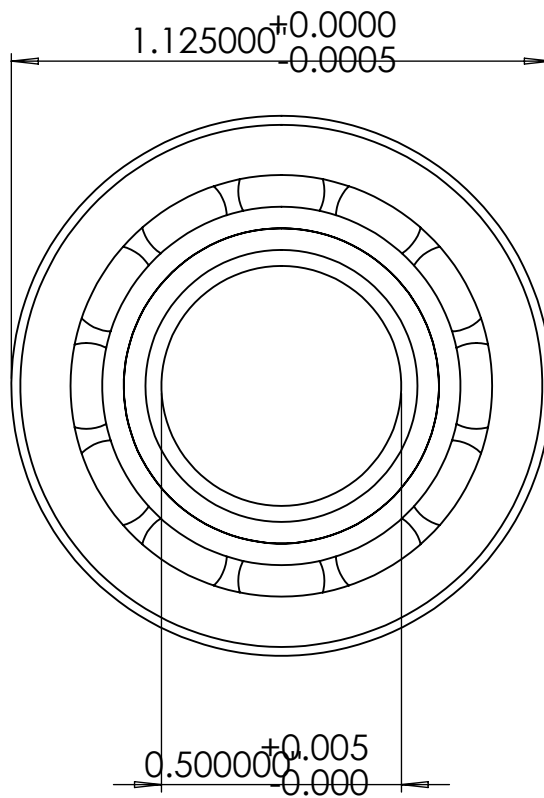
PART
NUMBER

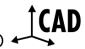
Default

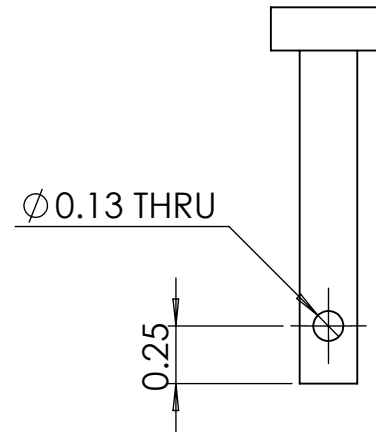
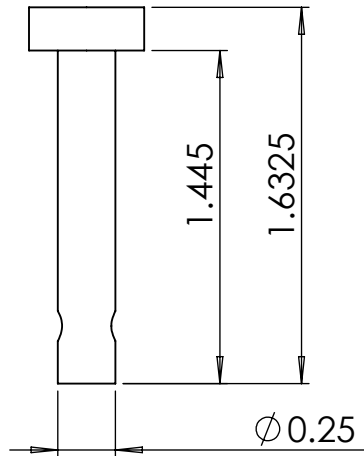
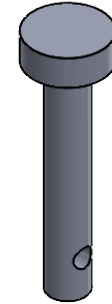
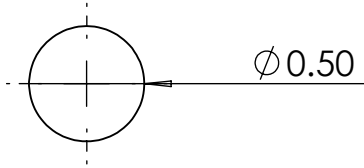
Information in this drawing is provided for reference only.



Trade Number:



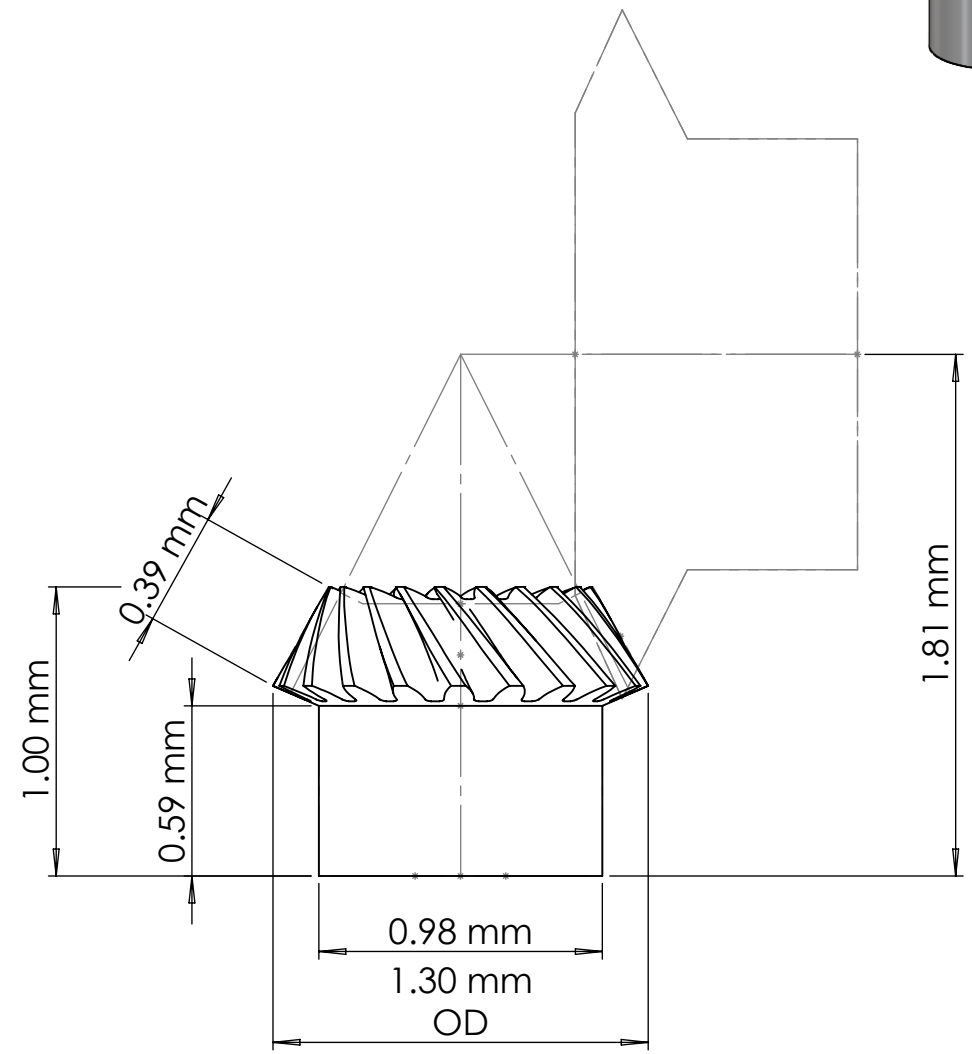
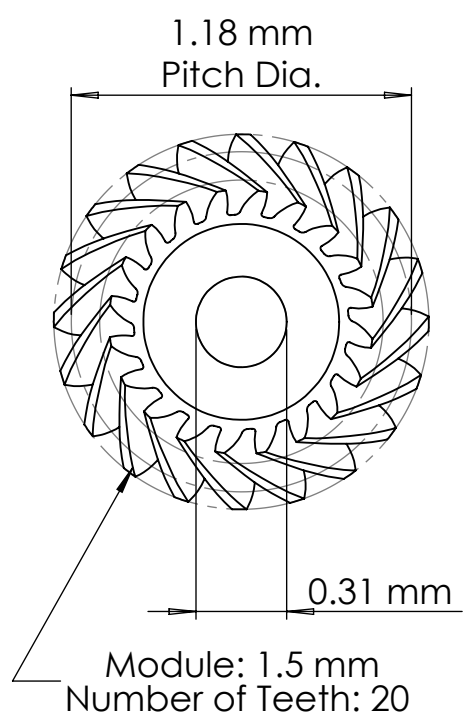
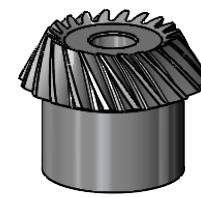
| | | |
|--|-------------|----------------|
| McMASTER-CARR  | PART NUMBER | Default |
| http://www.mcmaster.com | | |
| Information in this drawing is provided for reference only. | | |

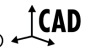


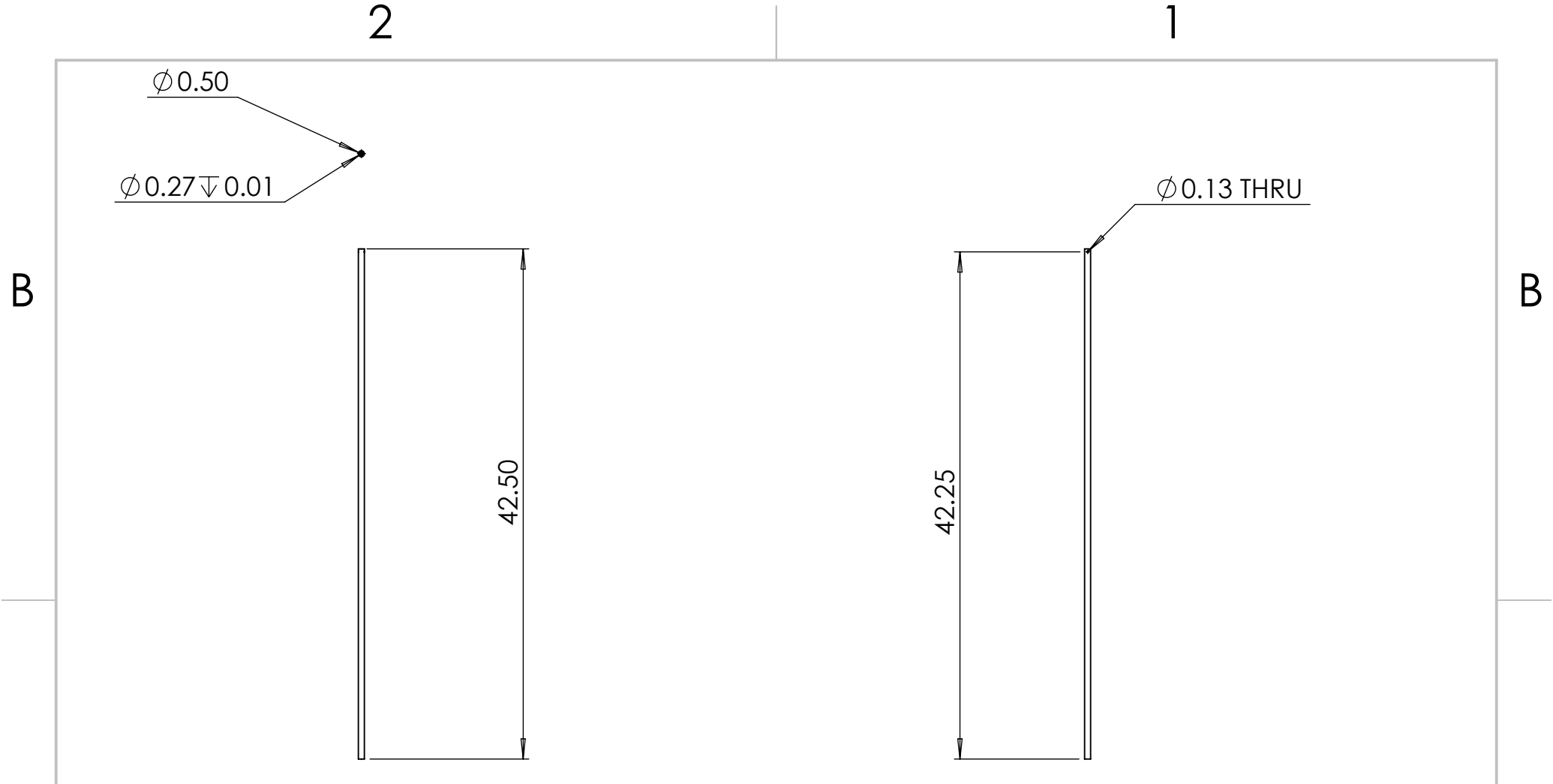
PROPRIETARY AND CONFIDENTIAL
 THE INFORMATION CONTAINED IN THIS DRAWING IS THE SOLE PROPERTY OF GYPSUM MANAGEMENT & SUPPLY. ANY REPRODUCTION IN PART OR AS A WHOLE WITHOUT THE WRITTEN PERMISSION OF GYPSUM MANAGEMENT & SUPPLY IS PROHIBITED.

| | | | | | |
|-------------|---------|---------------------------------|-------------------|------|------|
| | | UNLESS OTHERWISE SPECIFIED: | | NAME | DATE |
| | | DIMENSIONS ARE IN INCHES | DRAWN | GEB | 3/15 |
| | | TOLERANCES: | CHECKED | | |
| | | TWO PLACE DECIMAL ± 0.01 | ENG APPR. | | |
| | | THREE PLACE DECIMAL ± 0.001 | MFG APPR. | | |
| | | | Q.A. | | |
| | | | COMMENTS: | | |
| | | MATERIAL | 1020 Carbon Steel | | |
| | | FINISH | Machined | | |
| NEXT ASSY | USED ON | | | | |
| APPLICATION | | DO NOT SCALE DRAWING | | | |

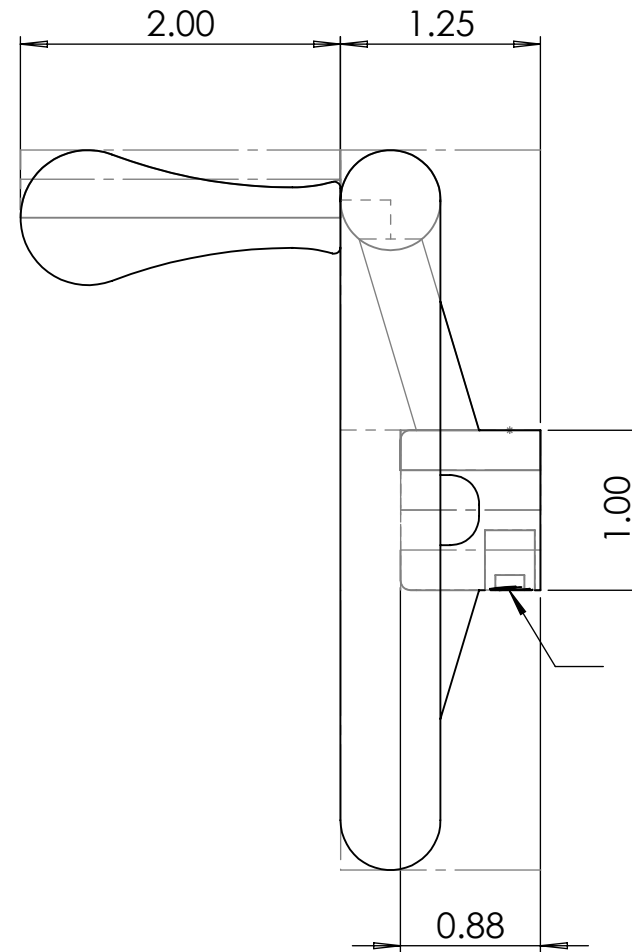
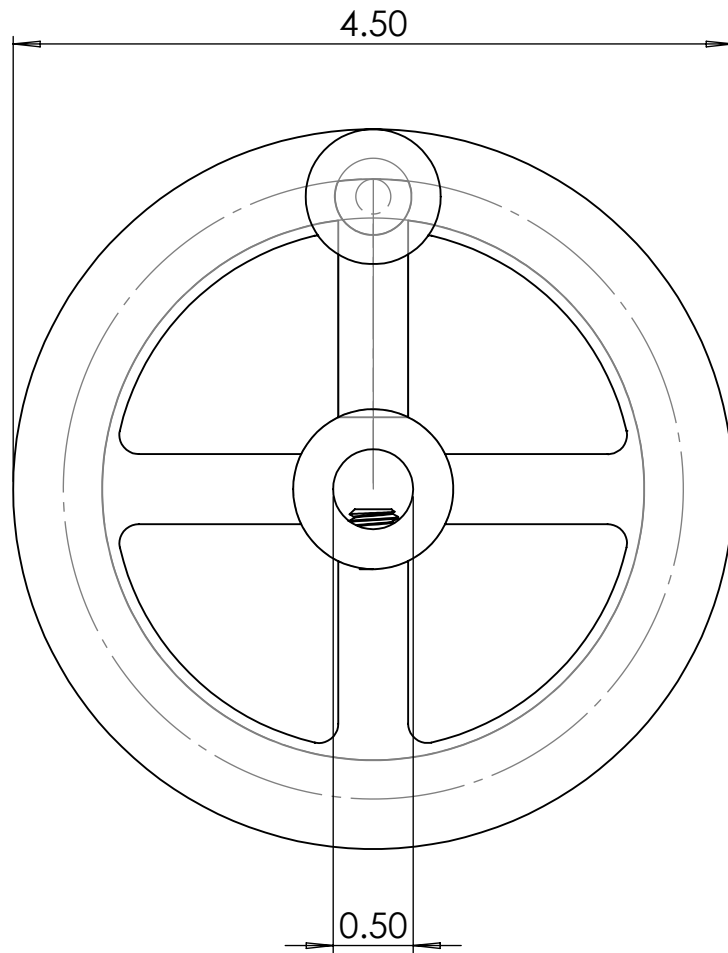
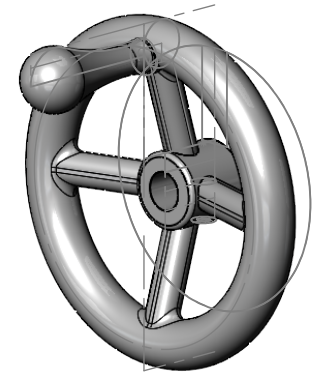
| | | |
|---------------------|--------------|----------------|
| TITLE: | | |
| Horizontal Gear Pin | | |
| SIZE | DWG. NO. | REV |
| A | Drywall_Cart | 1 |
| SCALE: 2:1 | WEIGHT: | SHEET 11 OF 46 |

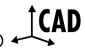


| | | |
|--|-------------|----------------|
| McMASTER-CARR  | PART NUMBER | Default |
| http://www.mcmaster.com | | |
| Information in this drawing is provided for reference only. | | |



| | | | | | | | | | |
|--|-------------|---------|-----------------------------|-----------|------|------|---|--------------|----------------|
| <p>PROPRIETARY AND CONFIDENTIAL</p> <p>THE INFORMATION CONTAINED IN THIS DRAWING IS THE SOLE PROPERTY OF GYPSUM MANAGEMENT & SUPPLY. ANY REPRODUCTION IN PART OR AS A WHOLE WITHOUT THE WRITTEN PERMISSION OF GYPSUM MANAGEMENT & SUPPLY IS PROHIBITED.</p> | | | UNLESS OTHERWISE SPECIFIED: | | NAME | DATE | <p>TITLE:</p> <h1>Horizontal Shaft</h1> | | |
| | | | DIMENSIONS ARE IN INCHES | DRAWN | GEB | 3/15 | | | |
| | | | TOLERANCES: | CHECKED | | | | | |
| | | | TWO PLACE DECIMAL ±0.01 | ENG APPR. | | | | | |
| | | | THREE PLACE DECIMAL ±0.001 | MFG APPR. | | | | | |
| | | | Q.A. | | | | | | |
| | | | COMMENTS: | | | | | | |
| | | | MATERIAL | | | | SIZE | DWG. NO. | REV |
| | | | 1020 Carbon Steel | | | | A | Drywall_Cart | 1 |
| | NEXT ASSY | USED ON | FINISH | | | | SCALE: 1:12 | WEIGHT: | SHEET 13 OF 46 |
| | | | Machined | | | | | | |
| | APPLICATION | | DO NOT SCALE DRAWING | | | | | | |



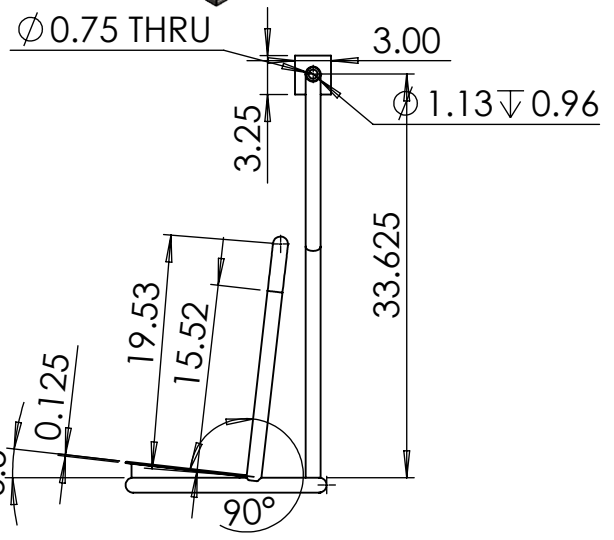
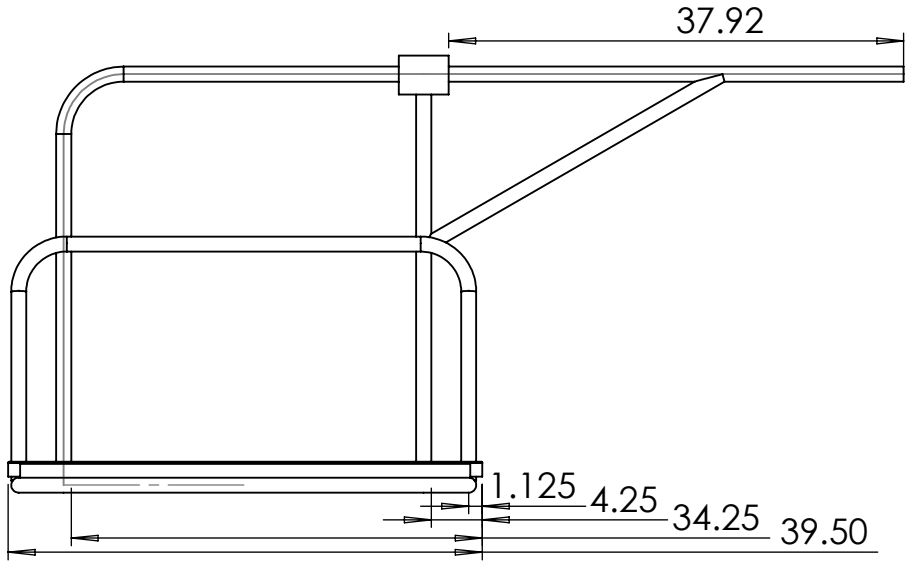
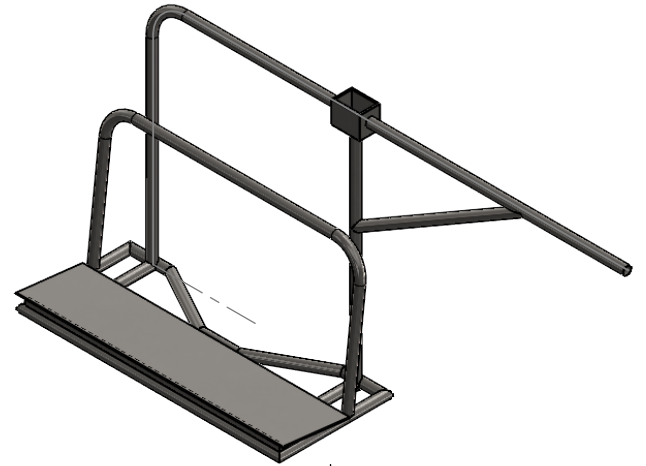
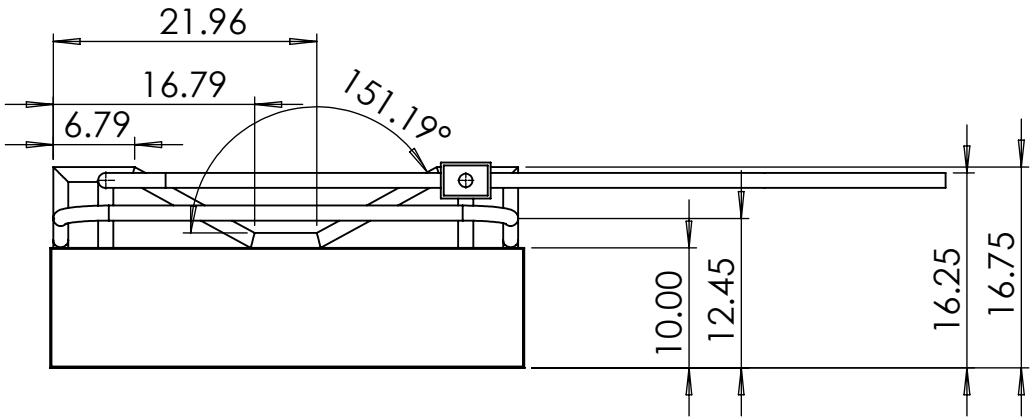
| | | |
|--|-------------|----------------|
| McMASTER-CARR  | PART NUMBER | Default |
| http://www.mcmaster.com | | |
| Information in this drawing is provided for reference only. | | |

2

1

B

B



A

A

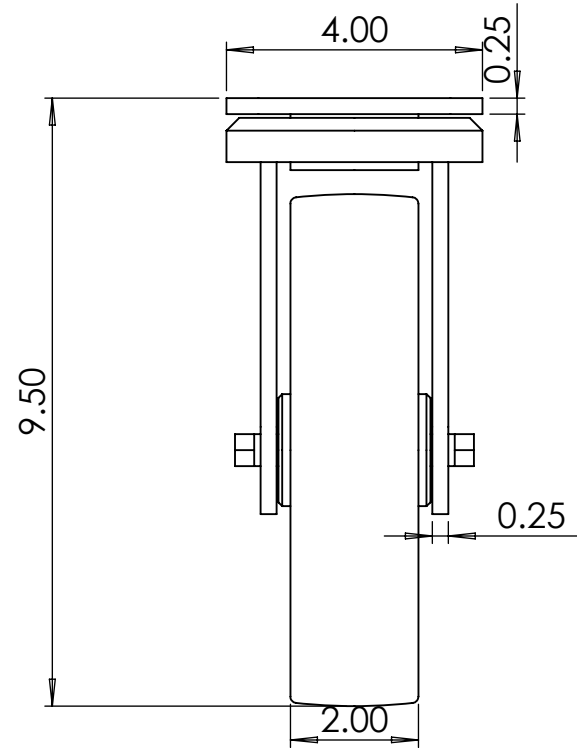
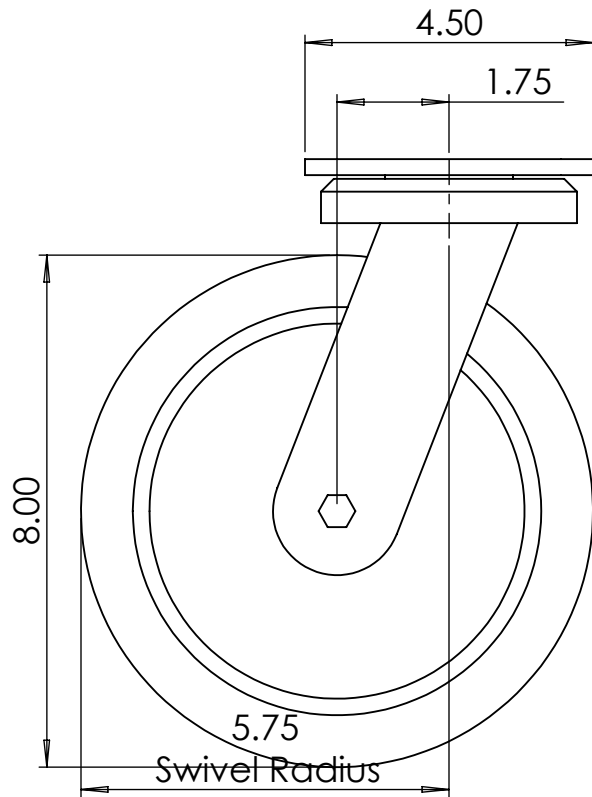
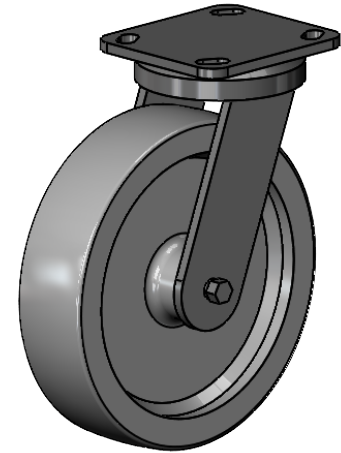
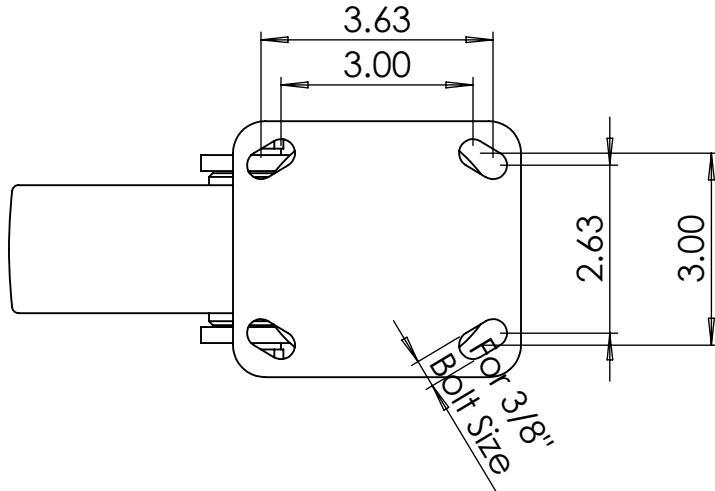
PROPRIETARY AND CONFIDENTIAL
 THE INFORMATION CONTAINED IN THIS DRAWING IS THE SOLE PROPERTY OF GYPSUM MANAGEMENT & SUPPLY. ANY REPRODUCTION IN PART OR AS A WHOLE WITHOUT THE WRITTEN PERMISSION OF GYPSUM MANAGEMENT & SUPPLY IS PROHIBITED.

| | | | | |
|-------------|---------|-----------------------------|-----------|------|
| | | UNLESS OTHERWISE SPECIFIED: | NAME | DATE |
| | | DIMENSIONS ARE IN INCHES | DRAWN | GMR |
| | | TOLERANCES: | CHECKED | 3/15 |
| | | TWO PLACE DECIMAL ±0.01 | ENG APPR. | |
| | | THREE PLACE DECIMAL ±0.001 | MFG APPR. | |
| | | | Q.A. | |
| | | | COMMENTS: | |
| | | MATERIAL | | |
| | | 1.25" Steel Pipe | | |
| | | FINISH | | |
| | | Machined | | |
| NEXT ASSY | USED ON | | | |
| | | | | |
| APPLICATION | | DO NOT SCALE DRAWING | | |

| | | |
|-------------|--------------|----------------|
| TITLE: | | |
| Base | | |
| SIZE | DWG. NO. | REV |
| A | Drywall_Cart | 1 |
| SCALE: 1:16 | | WEIGHT: |
| | | SHEET 15 OF 46 |

2

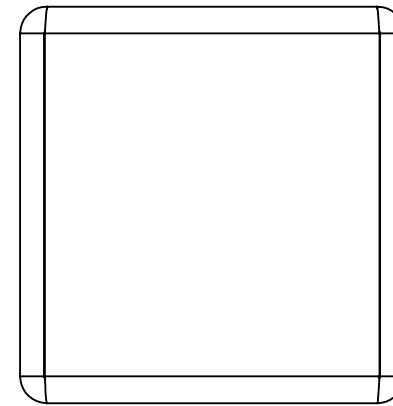
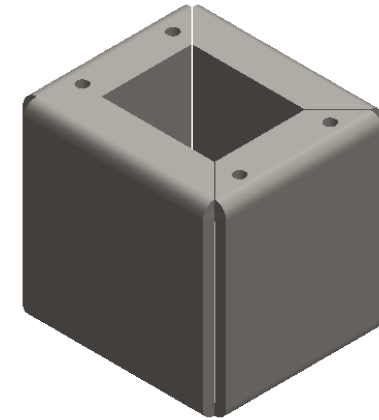
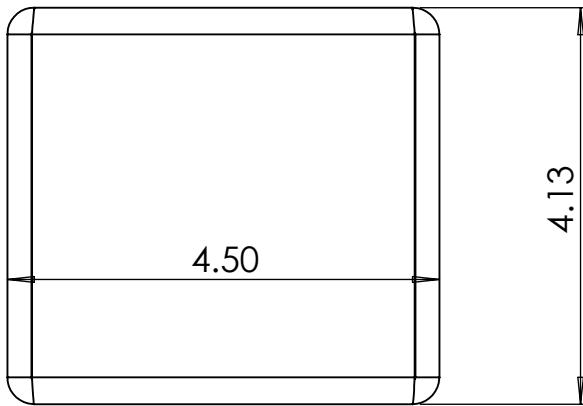
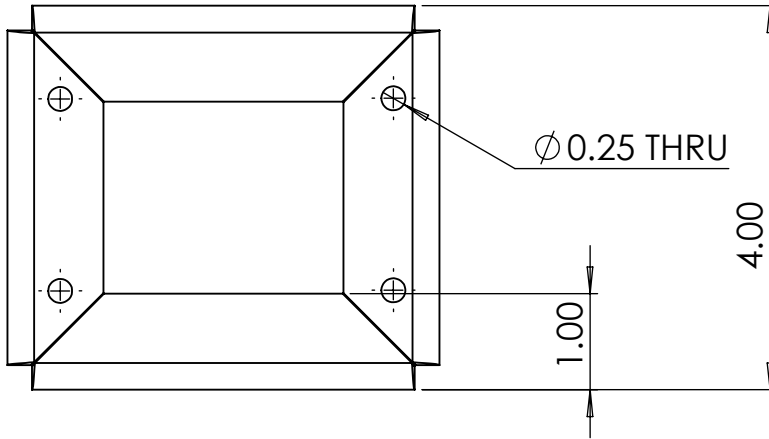
1



McMASTER-CARR  PART NUMBER **Default**

<http://www.mcmaster.com>

Information in this drawing is provided for reference only.



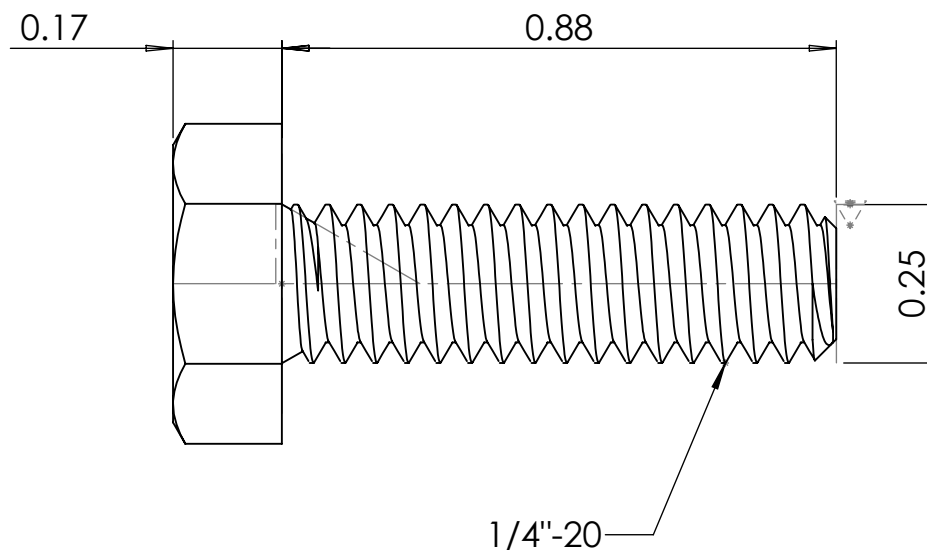
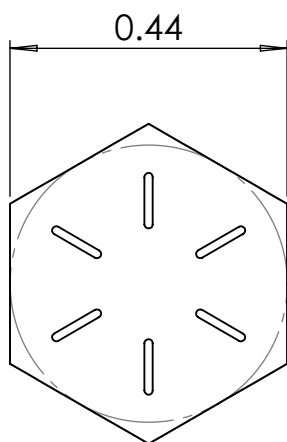
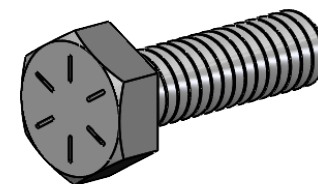
PROPRIETARY AND CONFIDENTIAL
 THE INFORMATION CONTAINED IN THIS DRAWING IS THE SOLE PROPERTY OF GYPSUM MANAGEMENT & SUPPLY. ANY REPRODUCTION IN PART OR AS A WHOLE WITHOUT THE WRITTEN PERMISSION OF GYPSUM MANAGEMENT & SUPPLY IS PROHIBITED.

| | | | | | |
|-------------|---------|-----------------------------|-----------|------|------|
| | | UNLESS OTHERWISE SPECIFIED: | | NAME | DATE |
| | | DIMENSIONS ARE IN INCHES | DRAWN | GMR | 3/15 |
| | | TOLERANCES: | CHECKED | | |
| | | TWO PLACE DECIMAL ±0.01 | ENG APPR. | | |
| | | THREE PLACE DECIMAL ±0.001 | MFG APPR. | | |
| | | | Q.A. | | |
| | | | COMMENTS: | | |
| | | MATERIAL | | | |
| | | 1/4" 1020 Steel Plate | | | |
| | | FINISH | | | |
| | | Machined | | | |
| NEXT ASSY | USED ON | | | | |
| APPLICATION | | DO NOT SCALE DRAWING | | | |

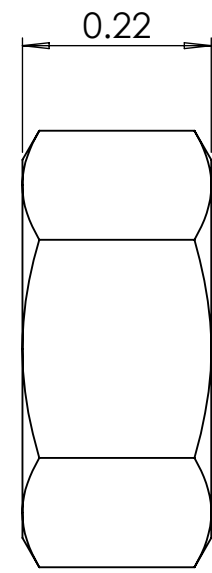
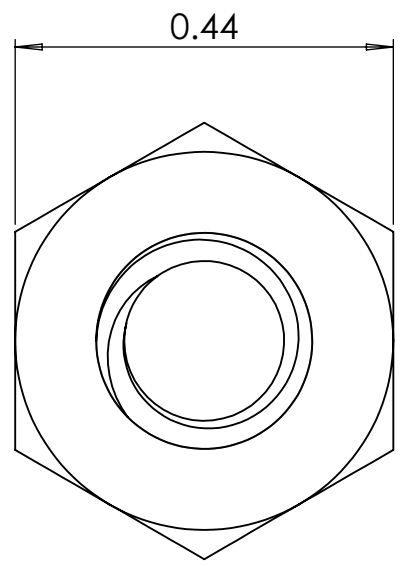
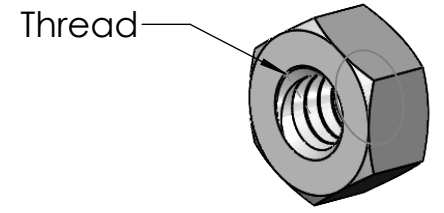
TITLE:
Wheel Spacer


| | | |
|----------|--------------|-----|
| SIZE | DWG. NO. | REV |
| A | Drywall_Cart | |

SCALE: 1:2 WEIGHT: SHEET 17 OF 46



| | | |
|---|-------------|----------------|
| McMASTER-CARR [↑] CAD _↙ | PART NUMBER | Default |
| http://www.mcmaster.com | | |
| Information in this drawing is provided for reference only. | | |



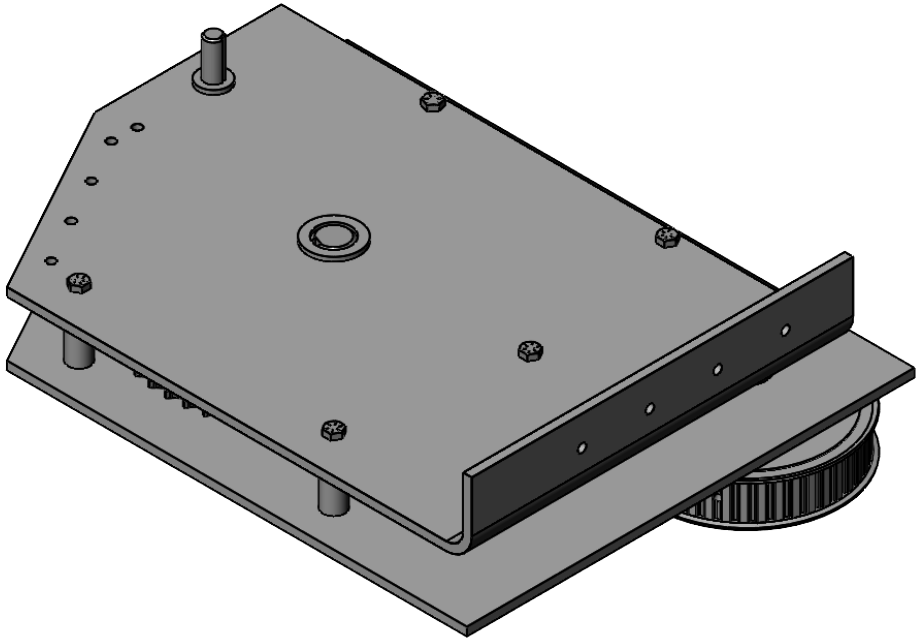
| | | |
|--|-------------|----------------|
| McMASTER-CARR  | PART NUMBER | Default |
| http://www.mcmaster.com | | |
| Information in this drawing is provided for reference only. | | |

2

1

B

B



A

A

PROPRIETARY AND CONFIDENTIAL
 THE INFORMATION CONTAINED IN THIS DRAWING IS THE SOLE PROPERTY OF GYPSUM MANAGEMENT & SUPPLY. ANY REPRODUCTION IN PART OR AS A WHOLE WITHOUT THE WRITTEN PERMISSION OF GYPSUM MANAGEMENT & SUPPLY IS PROHIBITED.

| | | | | | |
|-------------|---------|-----------------------------|-----------|------|------|
| | | UNLESS OTHERWISE SPECIFIED: | | NAME | DATE |
| | | DIMENSIONS ARE IN INCHES | DRAWN | WH | 3/15 |
| | | TOLERANCES: | CHECKED | | |
| | | TWO PLACE DECIMAL ±0.01 | ENG APPR. | | |
| | | THREE PLACE DECIMAL ±0.001 | MFG APPR. | | |
| | | | Q.A. | | |
| | | | COMMENTS: | | |
| | | MATERIAL | Various | | |
| | | FINISH | Various | | |
| NEXT ASSY | USED ON | | | | |
| APPLICATION | | DO NOT SCALE DRAWING | | | |

TITLE:
Gear Assembly

| | | |
|----------|--------------|----------|
| SIZE | DWG. NO. | REV |
| A | Drywall_Cart | 1 |

SCALE: 1:8 WEIGHT: SHEET 20 OF 45

2

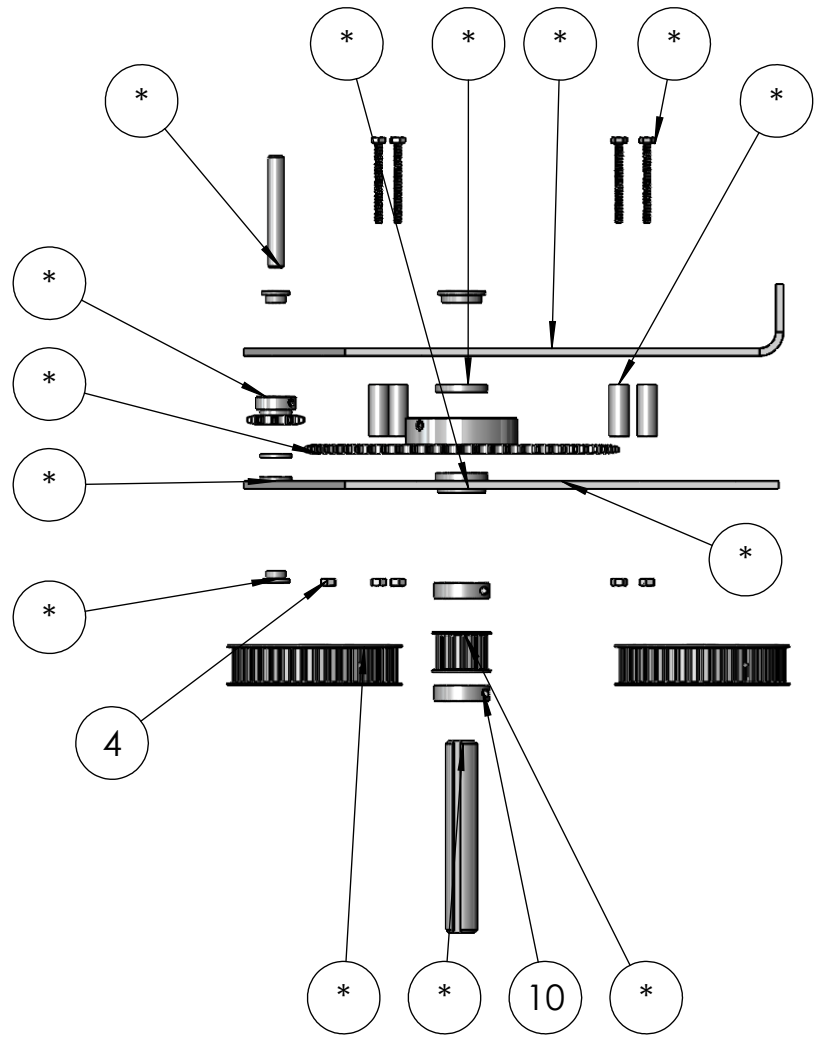
1

2

1

B

B



| ITEM NO. | PART NUMBER | DESCRIPTION | QTY. |
|----------|-------------------|--|------|
| 1 | sheet metal | | 1 |
| 2 | 6338K436 | Oil-Embedded Flanged Sleeve Bearing | 2 |
| 3 | 6338K417 | Oil-Embedded Flanged Sleeve Bearing | 2 |
| 4 | 1497K8 | 1045 Carbon Steel Keyed Rotary Shaft | 1 |
| 5 | sheet_metal_low | | 1 |
| 6 | 92510A582 | Aluminum Unthreaded Spacer | 5 |
| 7 | 92620A552 | Zinc Yellow-Chromate Plated Hex Head Screw | 5 |
| 8 | 95462A029 | Medium-Strength Steel Hex Nut | 6 |
| 9 | ATP44L100-A-NUK_a | 44 Teeth Timing Pulley | 2 |
| 10 | 6280K641 | Roller Chain Sprocket | 1 |
| 11 | 6236K371 | Roller Chain Sprocket | 1 |
| 12 | 5906K572 | Oil-Embedded Thrust Bronze Bearing | 2 |
| 13 | 5906K514 | Oil-Embedded Thrust Bronze Bearing | 2 |
| 14 | 1497K144 | 1045 Carbon Steel Keyed Rotary Shaft | 1 |
| 15 | 6435K18 | Clamping Shaft Collar | 2 |
| 16 | ATP14L100-A-HUK | 14 Teeth Timing Pulley | 1 |

A

A

PROPRIETARY AND CONFIDENTIAL
 THE INFORMATION CONTAINED IN THIS DRAWING IS THE SOLE PROPERTY OF GYPSUM MANAGEMENT & SUPPLY. ANY REPRODUCTION IN PART OR AS A WHOLE WITHOUT THE WRITTEN PERMISSION OF GYPSUM MANAGEMENT & SUPPLY IS PROHIBITED.

| | | | | | |
|--|-------------|-----------------------------|----------------------|------|------|
| | | UNLESS OTHERWISE SPECIFIED: | | NAME | DATE |
| | | DIMENSIONS ARE IN INCHES | DRAWN | WH | 3/15 |
| | | TOLERANCES: | CHECKED | | |
| | | TWO PLACE DECIMAL ±0.01 | ENG APPR. | | |
| | | THREE PLACE DECIMAL ±0.001 | MFG APPR. | | |
| | | | Q.A. | | |
| | | | COMMENTS: | | |
| | | MATERIAL | Various | | |
| | | FINISH | Various | | |
| | NEXT ASSY | USED ON | | | |
| | APPLICATION | | DO NOT SCALE DRAWING | | |

TITLE:
Gear Assembly Exploded

SIZE **A** DWG. NO. Drywall_Cart REV **1**

SCALE: 1:12 WEIGHT: SHEET 21 OF 45

2

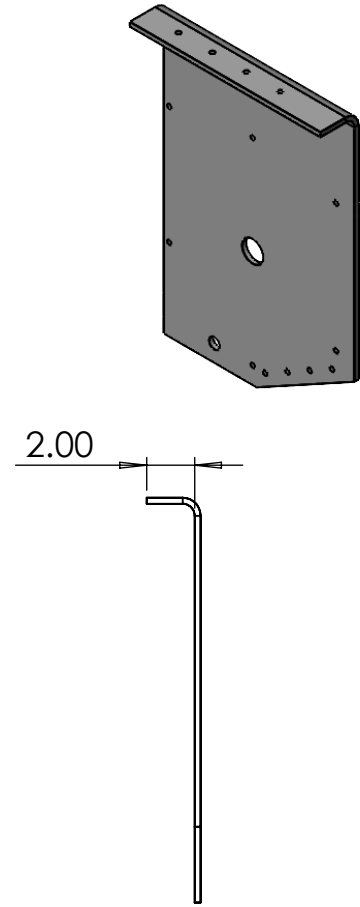
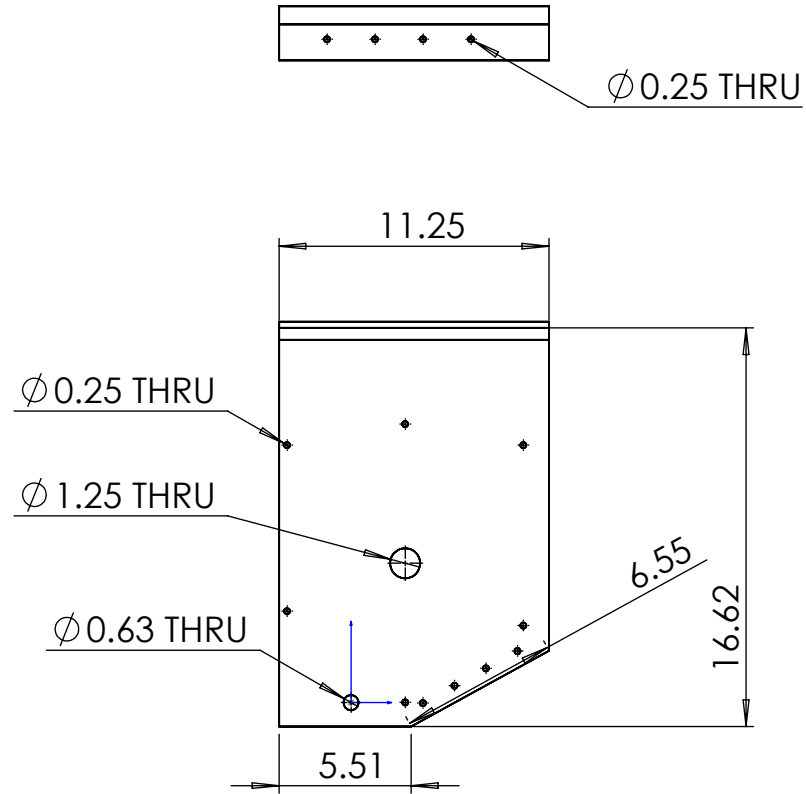
1

2

1

B

B



A

A

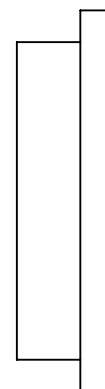
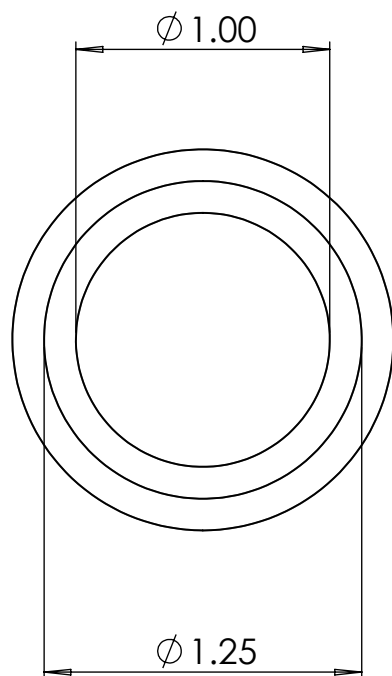
PROPRIETARY AND CONFIDENTIAL
 THE INFORMATION CONTAINED IN THIS DRAWING IS THE SOLE PROPERTY OF <INSERT COMPANY NAME HERE>. ANY REPRODUCTION IN PART OR AS A WHOLE WITHOUT THE WRITTEN PERMISSION OF <INSERT COMPANY NAME HERE> IS PROHIBITED.

| | | | | | |
|-------------|---------|-----------------------------|------------|------|---------|
| | | UNLESS OTHERWISE SPECIFIED: | | NAME | DATE |
| | | DIMENSIONS ARE IN INCHES | DRAWN | WH | 4/27/22 |
| | | TOLERANCES: | CHECKED | | |
| | | TWO PLACE DECIMAL ±0.01 | ENG APPR. | | |
| | | THREE PLACE DECIMAL ±0.001 | MFG APPR. | | |
| | | | Q.A. | | |
| | | | COMMENTS: | | |
| | | MATERIAL | 1020 Steel | | |
| | | FINISH | Machined | | |
| NEXT ASSY | USED ON | | | | |
| APPLICATION | | DO NOT SCALE DRAWING | | | |

| | | |
|-------------|--------------|----------------|
| TITLE: | | |
| Sheet Metal | | |
| SIZE | DWG. NO. | REV |
| A | Drywall_Cart | 1 |
| SCALE: 1:8 | WEIGHT: | SHEET 22 OF 45 |

2

1



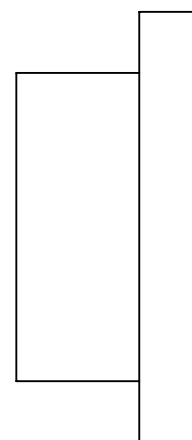
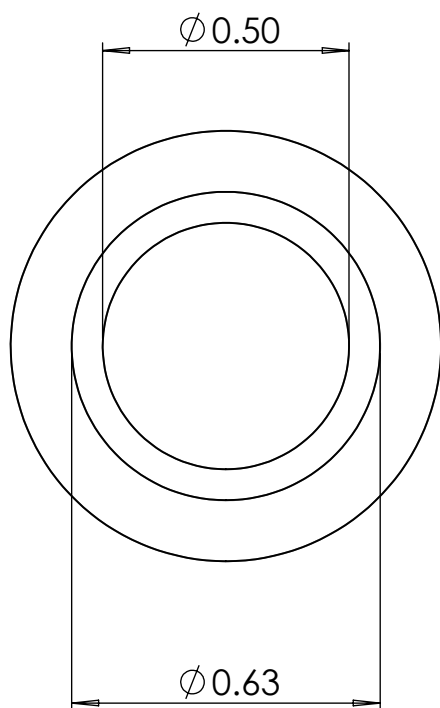
McMASTER-CARR 


<http://www.mcmaster.com>

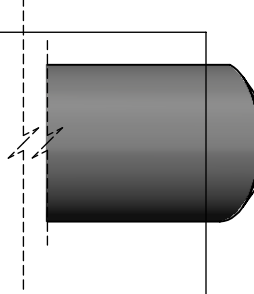
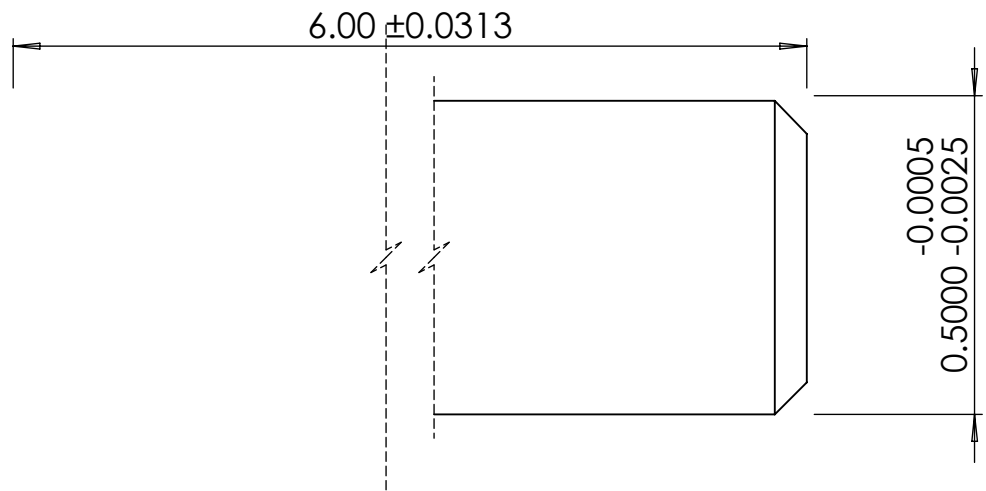
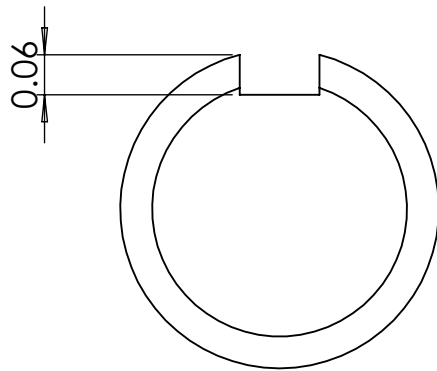
PART
NUMBER

Default

Information in this drawing is provided for reference only.



| | | |
|--|-------------|----------------|
| McMASTER-CARR  | PART NUMBER | Default |
| http://www.mcmaster.com | | |
| Information in this drawing is provided for reference only. | | |



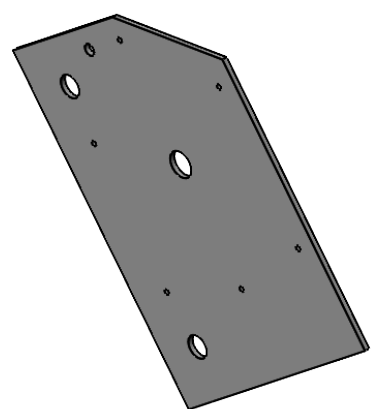
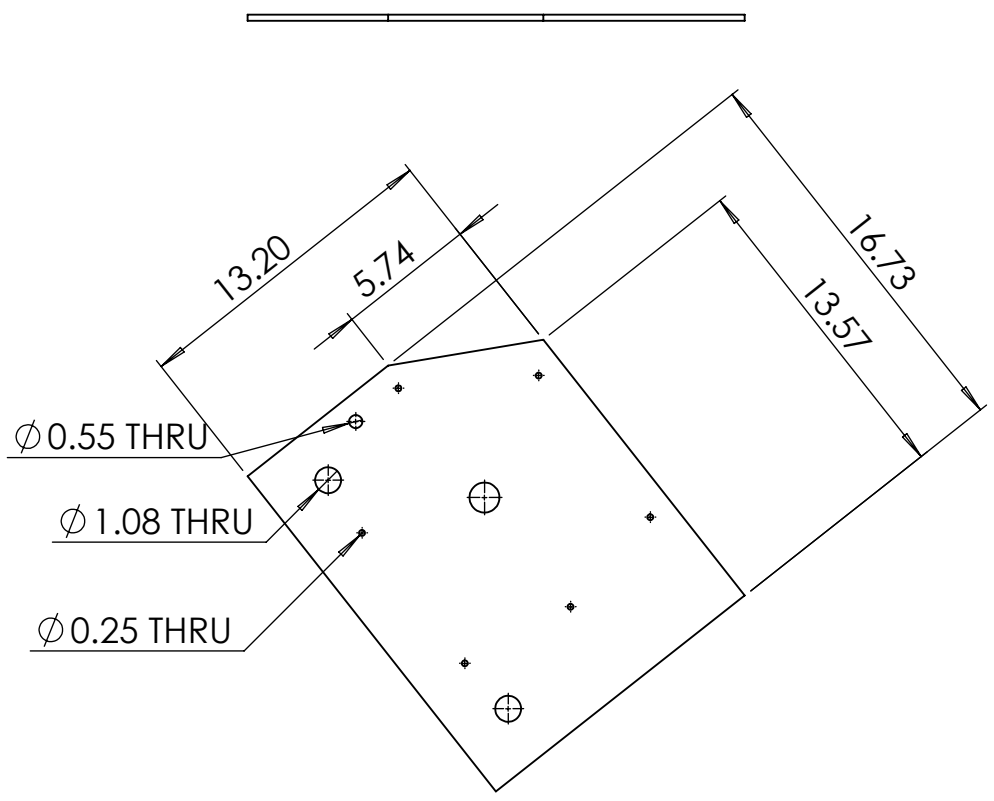
Straightness Tolerance:

| | |
|---|----------------------------|
| McMASTER-CARR [↑] CAD _← | PART NUMBER Default |
| http://www.mcmaster.com | |
| Information in this drawing is provided for reference only. | |

B

1

B



A

A

| | | | | | |
|-------------|---------|---------------------------------|------------|------|---------|
| | | UNLESS OTHERWISE SPECIFIED: | | NAME | DATE |
| | | DIMENSIONS ARE IN INCHES | DRAWN | WH | 4/27/22 |
| | | TOLERANCES: | CHECKED | | |
| | | TWO PLACE DECIMAL ± 0.01 | ENG APPR. | | |
| | | THREE PLACE DECIMAL ± 0.001 | MFG APPR. | | |
| | | | Q.A. | | |
| | | | COMMENTS: | | |
| | | MATERIAL | 1020 Steel | | |
| | | FINISH | Machined | | |
| NEXT ASSY | USED ON | | | | |
| APPLICATION | | DO NOT SCALE DRAWING | | | |

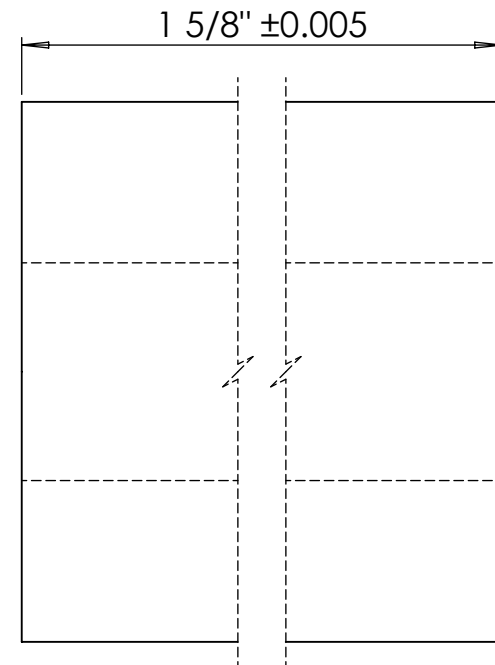
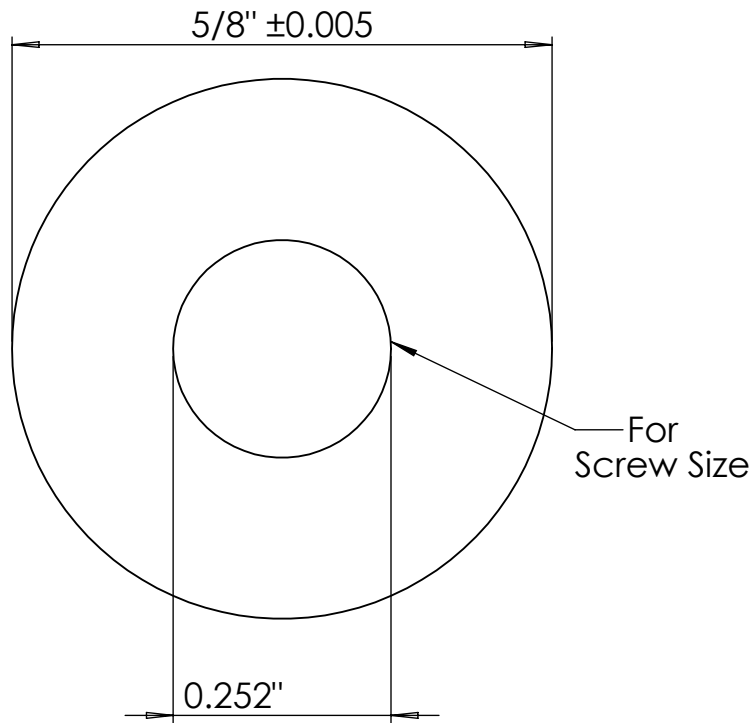
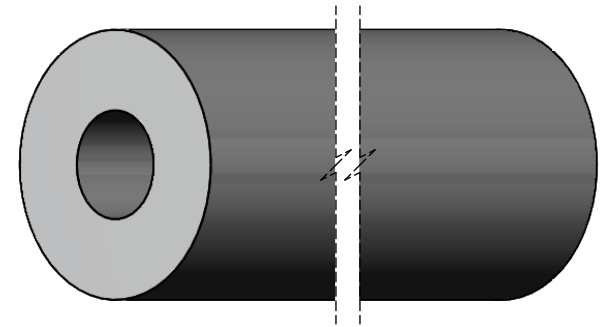
PROPRIETARY AND CONFIDENTIAL
 THE INFORMATION CONTAINED IN THIS DRAWING IS THE SOLE PROPERTY OF <INSERT COMPANY NAME HERE>. ANY REPRODUCTION IN PART OR AS A WHOLE WITHOUT THE WRITTEN PERMISSION OF <INSERT COMPANY NAME HERE> IS PROHIBITED.

TITLE:
Sheet Metal Low

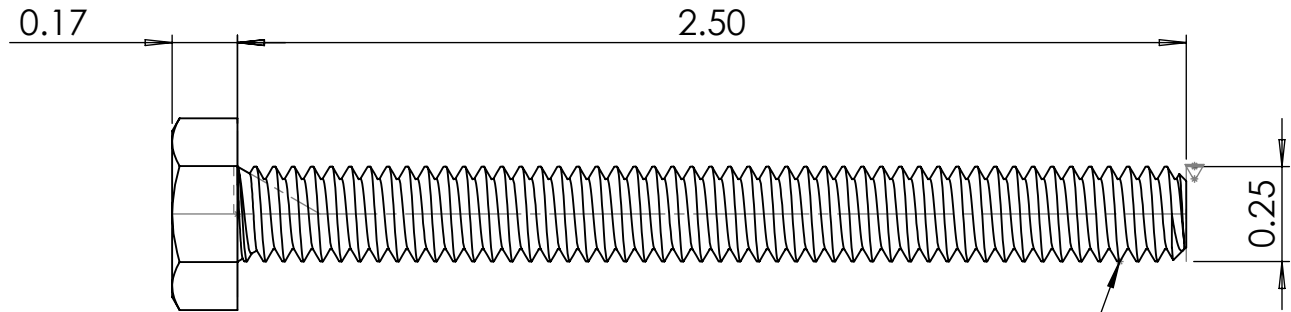
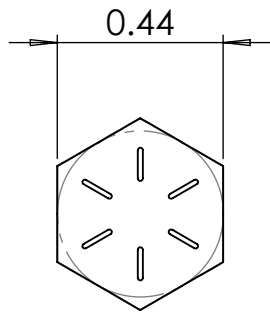
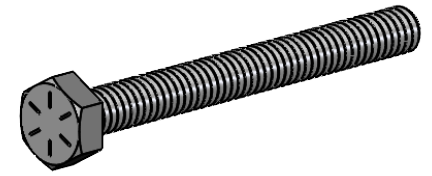
| | | |
|------------|--------------|----------------|
| SIZE | DWG. NO. | REV |
| A | Drywall_Cart | |
| SCALE: 1:8 | WEIGHT: | SHEET 26 OF 45 |

2

1



| | | |
|---|----------------|----------------|
| McMASTER-CARR [↑] CAD [↙] http://www.mcmaster.com | PART NUMBER | Default |
| Information in this drawing is provided for reference only. | | |



1/4"-20

McMASTER-CARR 

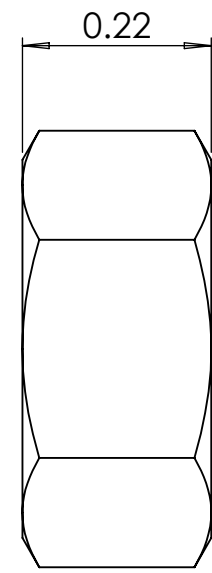
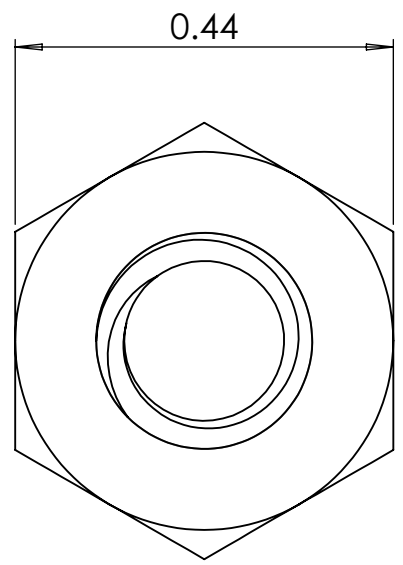
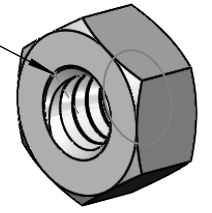
<http://www.mcmaster.com>

PART
NUMBER

Default

Information in this drawing is provided for reference only.

Thread



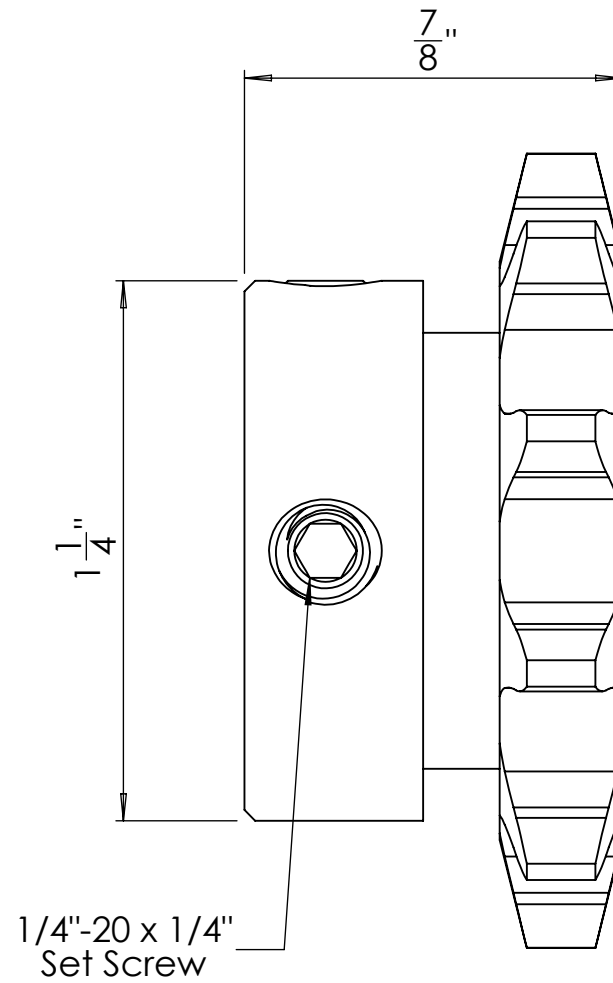
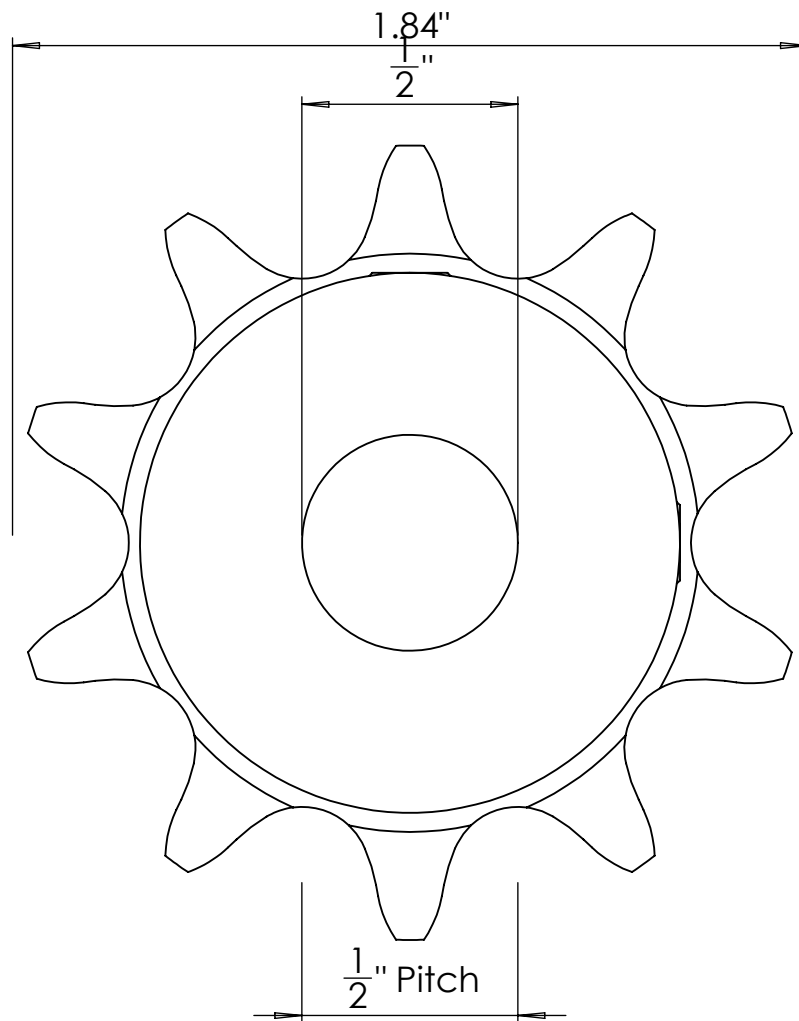
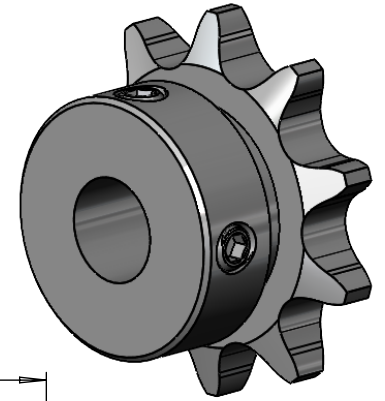
McMASTER-CARR 

<http://www.mcmaster.com>

PART NUMBER

Default

Information in this drawing is provided for reference only.



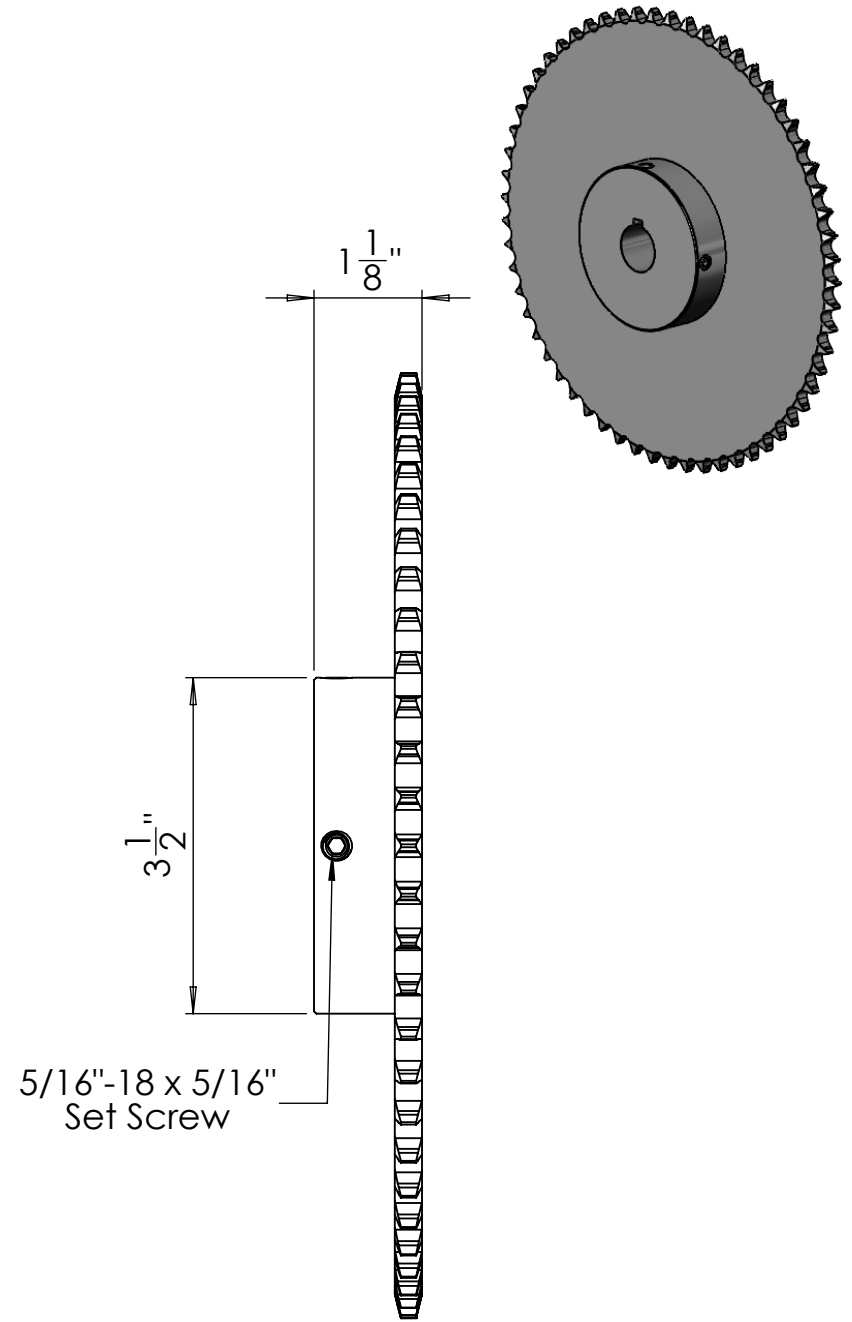
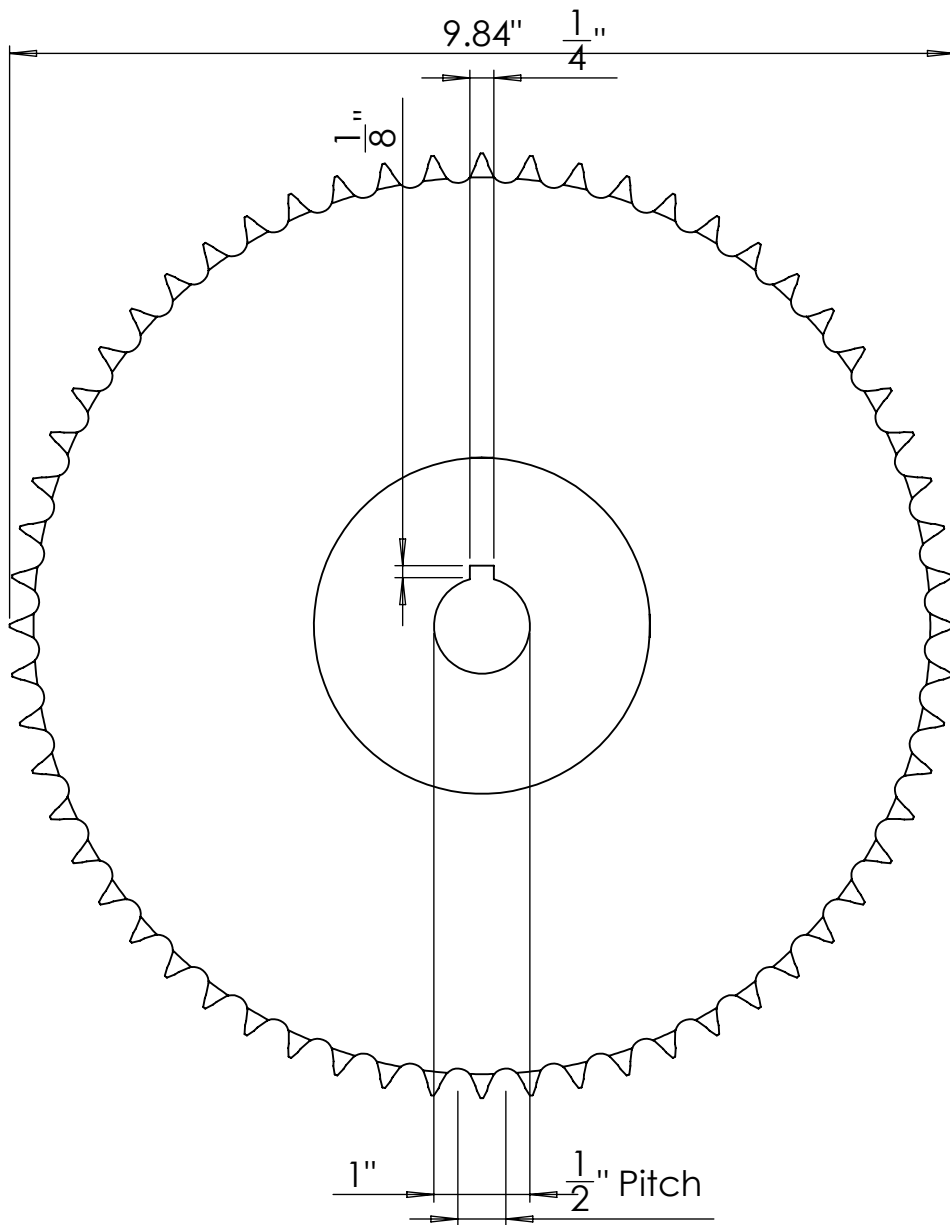
McMASTER-CARR 

<http://www.mcmaster.com>

PART
NUMBER

Default

Information in this drawing is provided for reference only.

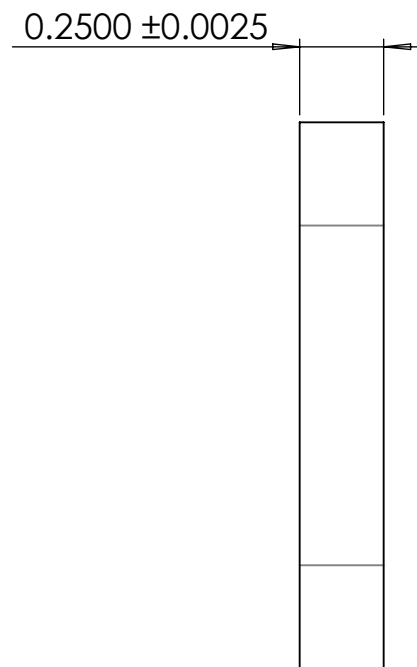
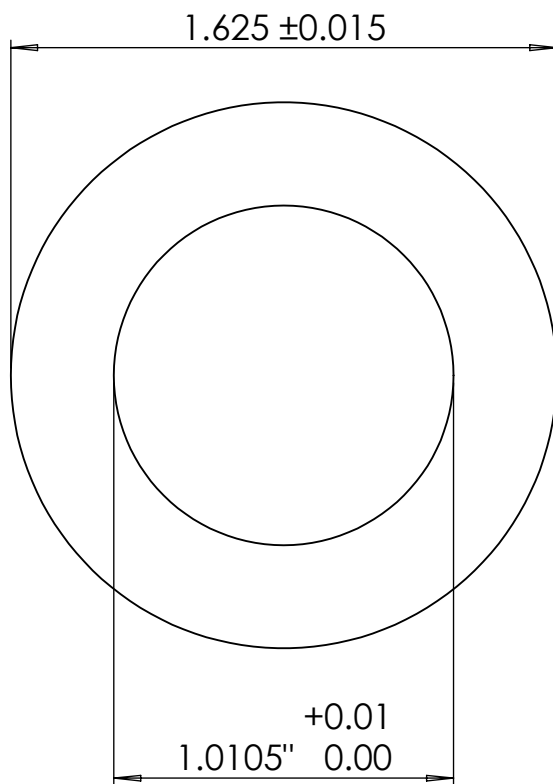
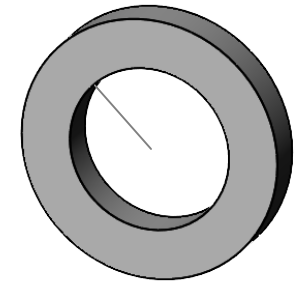


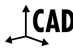
McMASTER-CARR 
<http://www.mcmaster.com>

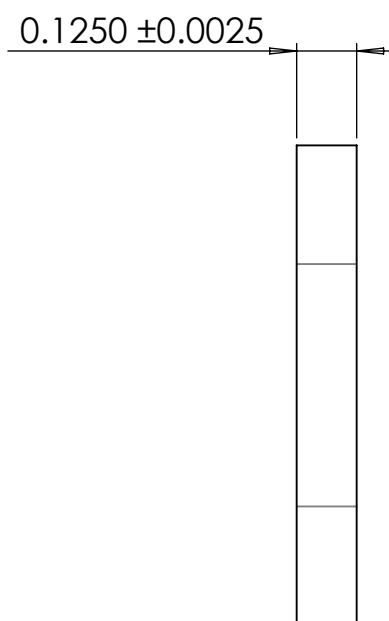
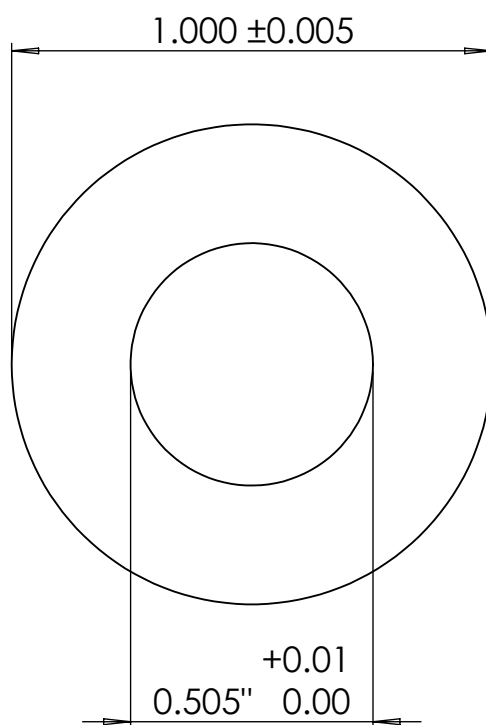
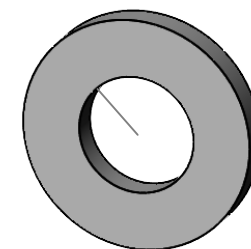
PART
NUMBER

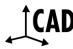
Default

Information in this drawing is provided for reference only.

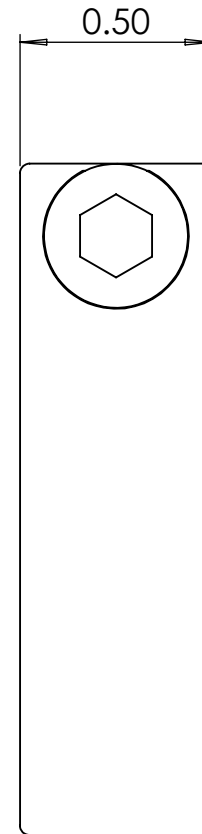
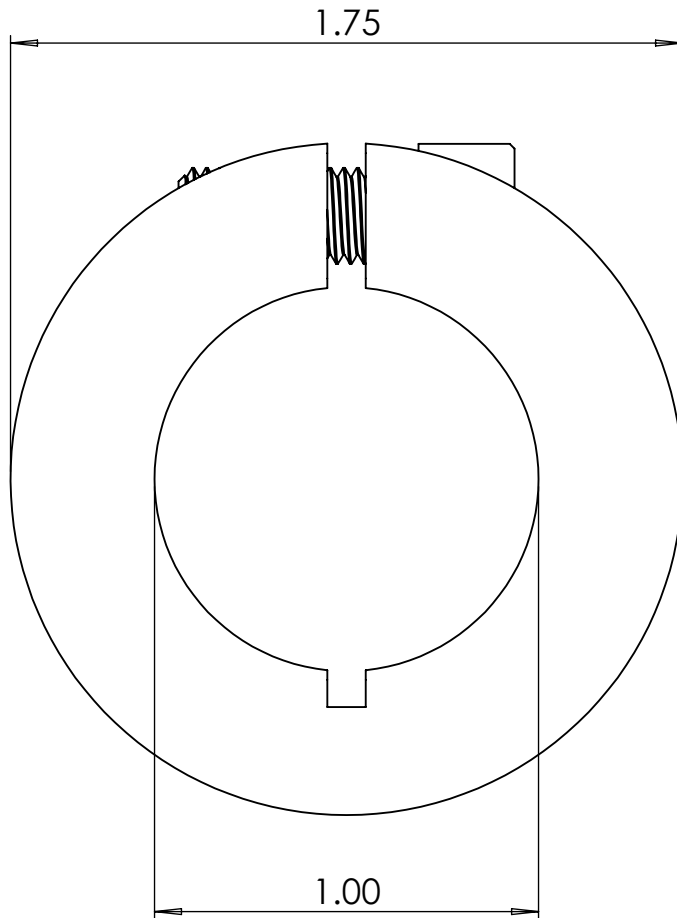
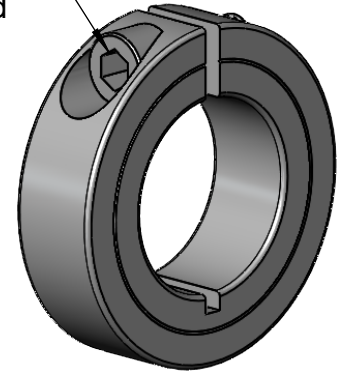


| | | |
|--|-------------|----------------|
| McMASTER-CARR  | PART NUMBER | Default |
| http://www.mcmaster.com | | |
| Information in this drawing is provided for reference only. | | |



| | | |
|--|-------------|----------------|
| McMASTER-CARR  | PART NUMBER | Default |
| http://www.mcmaster.com | | |
| Information in this drawing is provided for reference only. | | |

1/4"-28 x 5/8"
Socket Head
Cap Screw



McMASTER-CARR 

<http://www.mcmaster.com>

PART
NUMBER

Default

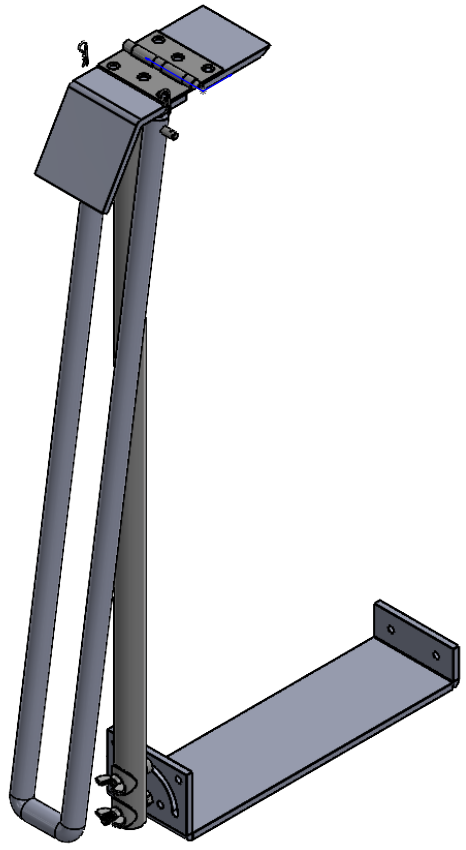
Information in this drawing is provided for reference only.

2

1

B

B



A

A

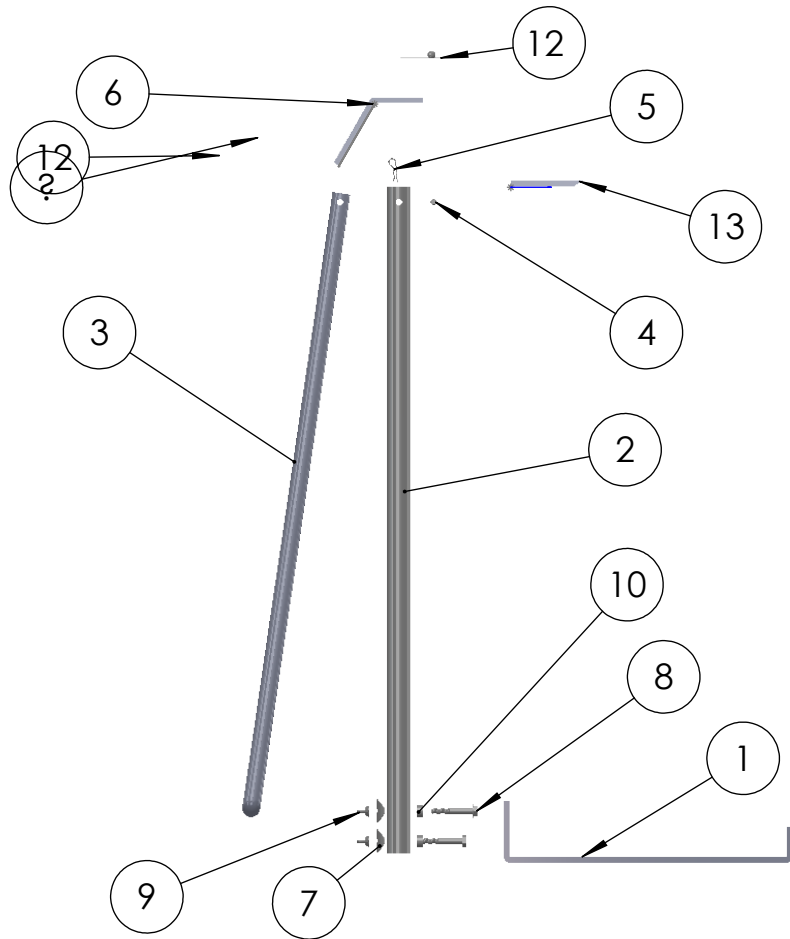
PROPRIETARY AND CONFIDENTIAL
 THE INFORMATION CONTAINED IN THIS DRAWING IS THE SOLE PROPERTY OF GYPSUM MANAGEMENT & SUPPLY. ANY REPRODUCTION IN PART OR AS A WHOLE WITHOUT THE WRITTEN PERMISSION OF GYPSUM MANAGEMENT & SUPPLY IS PROHIBITED.

| | | | | | |
|-------------|---------|-----------------------------|-----------|---------|------|
| | | UNLESS OTHERWISE SPECIFIED: | | NAME | DATE |
| | | DIMENSIONS ARE IN INCHES | DRAWN | RG & NB | 3/15 |
| | | TOLERANCES: | CHECKED | | |
| | | TWO PLACE DECIMAL ±0.01 | ENG APPR. | | |
| | | THREE PLACE DECIMAL ±0.001 | MFG APPR. | | |
| | | | Q.A. | | |
| | | | COMMENTS: | | |
| | | MATERIAL | Various | | |
| | | FINISH | Various | | |
| NEXT ASSY | USED ON | | | | |
| APPLICATION | | DO NOT SCALE DRAWING | | | |

| | | |
|-----------------------------|--------------|----------------|
| TITLE: | | |
| <h1>Kickstand Assembly</h1> | | |
| SIZE | DWG. NO. | REV |
| A | Drywall_Cart | 1 |
| SCALE: 1:12 | | WEIGHT: |
| | | SHEET 35 OF 45 |

2

1



| ITEM NO. | PART NUMBER | DESCRIPTION | QTY. |
|----------|--|--|------|
| 1 | Mounting Bracket | | 1 |
| 2 | 7767T623 | Low-Carbon Steel Round Tube | 1 |
| 3 | Safety Arm | | 1 |
| 4 | 98381A558 | Dowel Pin | 1 |
| 5 | 90492A150 | Hairpin Cotter Pins | 2 |
| 6 | Top Hinge Plate | | 1 |
| 7 | 91844A410 | Zinc-Plated Steel Curved Washer | 2 |
| 8 | 91257A548 | Zinc Yellow-Chromate Plated Hex Head Screw | 2 |
| 9 | 90866A029 | Zinc-Plated Steel Wing Nut | 2 |
| 10 | 92510A762 | Aluminum Unthreaded Spacer | 2 |
| 11 | 92917A155 | Nickel-Plated Brass Washer | 1 |
| 12 | 1488A11_Surface-Mount Hinge with Holes | Surface-Mount Hinge with Holes | 1 |
| 13 | Trigger Plate | | 1 |

PROPRIETARY AND CONFIDENTIAL
 THE INFORMATION CONTAINED IN THIS DRAWING IS THE SOLE PROPERTY OF GYPSUM MANAGEMENT & SUPPLY. ANY REPRODUCTION IN PART OR AS A WHOLE WITHOUT THE WRITTEN PERMISSION OF GYPSUM MANAGEMENT & SUPPLY IS PROHIBITED.

| | | | | | |
|-------------|---------|-----------------------------|-----------|---------|------|
| | | UNLESS OTHERWISE SPECIFIED: | | NAME | DATE |
| | | DIMENSIONS ARE IN INCHES | DRAWN | RG & NB | 3/15 |
| | | TOLERANCES: | CHECKED | | |
| | | TWO PLACE DECIMAL ±0.01 | ENG APPR. | | |
| | | THREE PLACE DECIMAL ±0.001 | MFG APPR. | | |
| | | | Q.A. | | |
| | | | COMMENTS: | | |
| | | MATERIAL | Various | | |
| | | FINISH | Various | | |
| NEXT ASSY | USED ON | | | | |
| APPLICATION | | DO NOT SCALE DRAWING | | | |

TITLE:
Kickstand Assembly Exploded

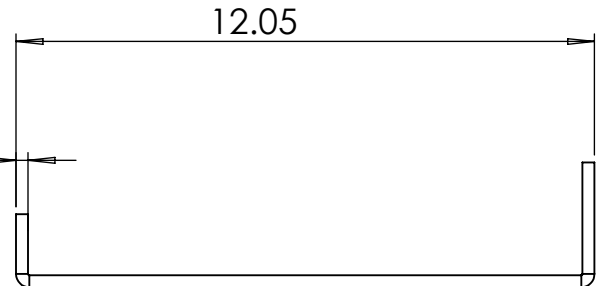
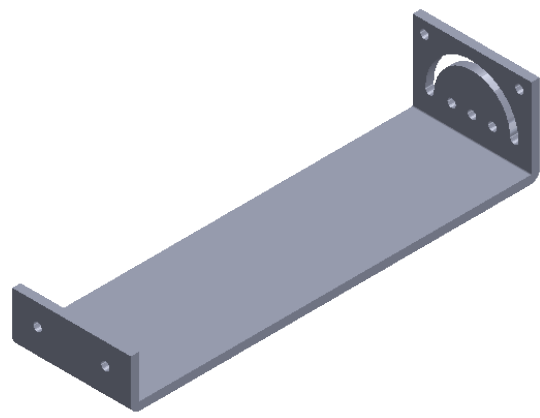
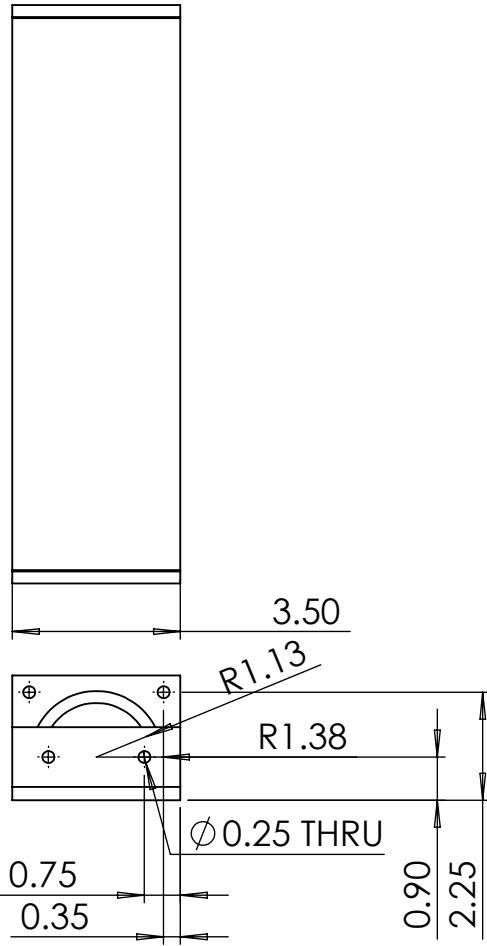
| | | |
|-------------|--------------|----------------|
| SIZE | DWG. NO. | REV |
| A | Drywall_Cart | 1 |
| SCALE: 1:16 | | WEIGHT: |
| | | SHEET 36 OF 45 |

2

1

B

B



A

A

PROPRIETARY AND CONFIDENTIAL
 THE INFORMATION CONTAINED IN THIS DRAWING IS THE SOLE PROPERTY OF GYPSUM MANAGEMENT & SUPPLY. ANY REPRODUCTION IN PART OR AS A WHOLE WITHOUT THE WRITTEN PERMISSION OF GYPSUM MANAGEMENT & SUPPLY IS PROHIBITED.

| | | | | | |
|-------------|---------|-----------------------------|------------------|---------|------|
| | | UNLESS OTHERWISE SPECIFIED: | | NAME | DATE |
| | | DIMENSIONS ARE IN INCHES | DRAWN | RG & NB | 3/15 |
| | | TOLERANCES: | CHECKED | | |
| | | TWO PLACE DECIMAL ±0.01 | ENG APPR. | | |
| | | THREE PLACE DECIMAL ±0.001 | MFG APPR. | | |
| | | | Q.A. | | |
| | | | COMMENTS: | | |
| | | MATERIAL | 0.25" 1020 Sheet | | |
| | | FINISH | Machined | | |
| NEXT ASSY | USED ON | | | | |
| APPLICATION | | DO NOT SCALE DRAWING | | | |

| | | |
|---------------------------|--------------|----------------|
| TITLE: | | |
| <h1>Mounting Bracket</h1> | | |
| SIZE | DWG. NO. | REV |
| A | Drywall_Cart | 1 |
| SCALE: 1:4 | WEIGHT: | SHEET 37 OF 45 |

2

1

B

B

A

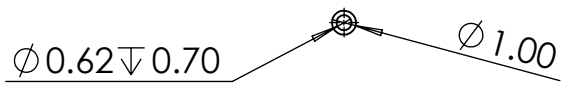
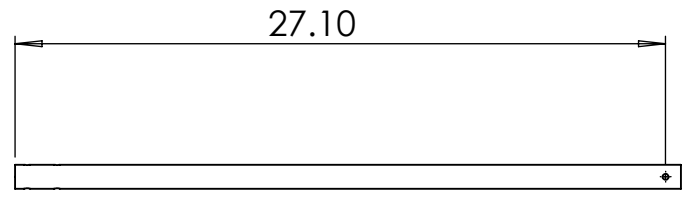
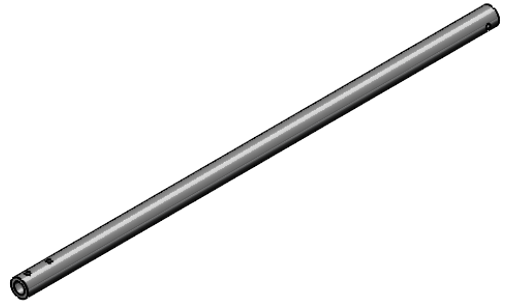
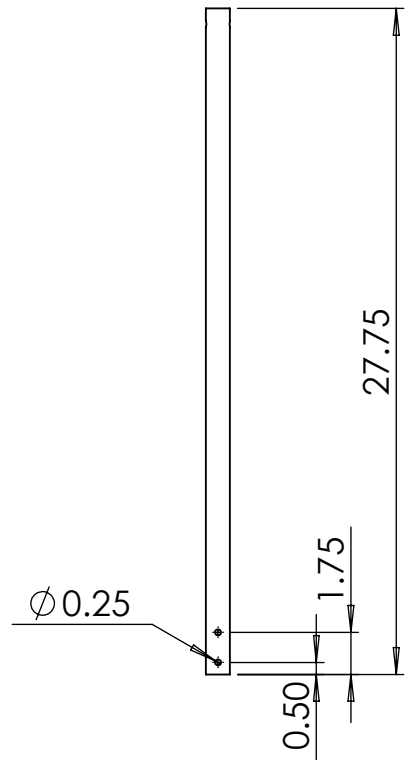
A

2

1

2

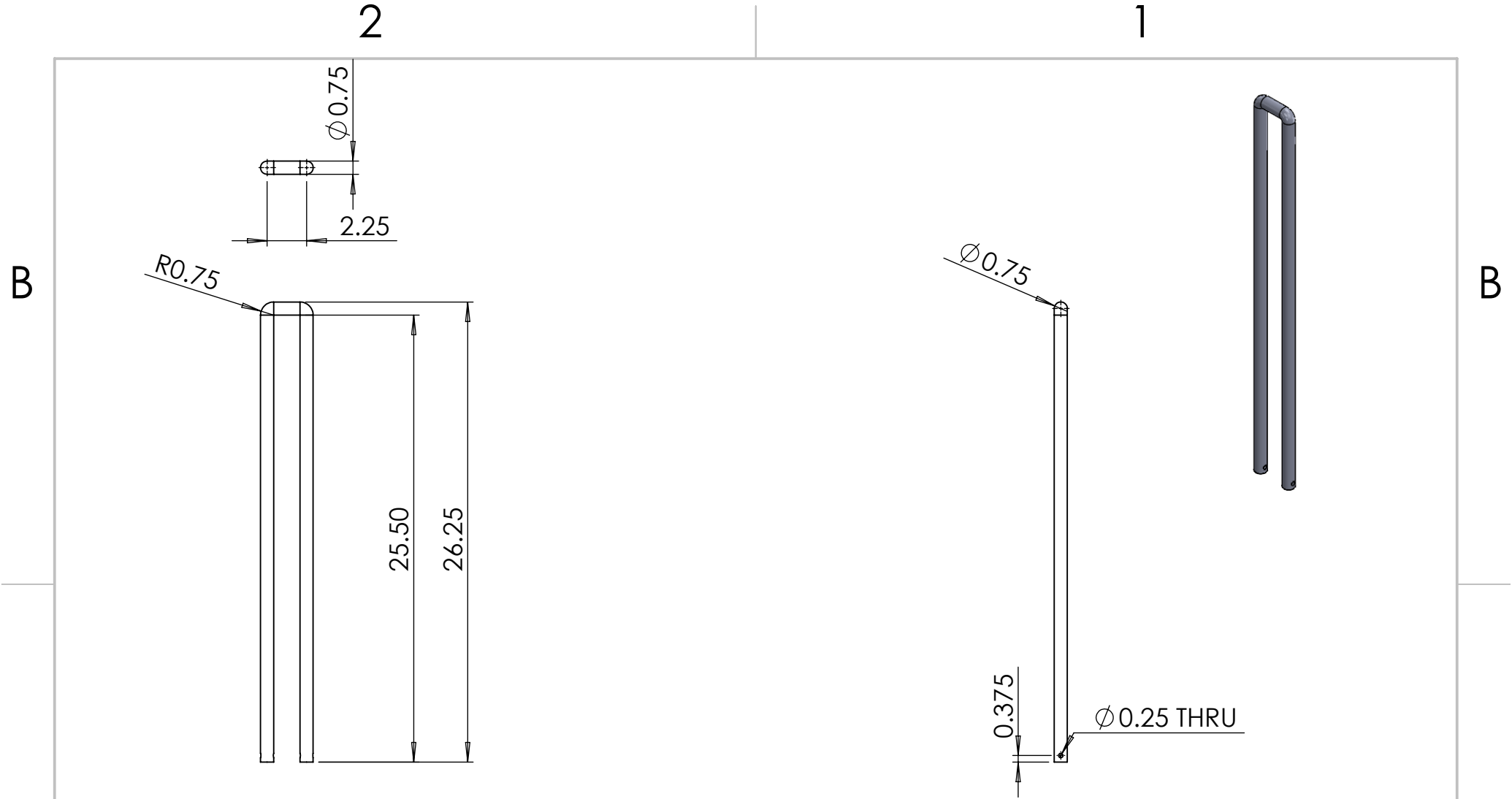
1



PROPRIETARY AND CONFIDENTIAL
 THE INFORMATION CONTAINED IN THIS DRAWING IS THE SOLE PROPERTY OF <INSERT COMPANY NAME HERE>. ANY REPRODUCTION IN PART OR AS A WHOLE WITHOUT THE WRITTEN PERMISSION OF <INSERT COMPANY NAME HERE> IS PROHIBITED.

| | | | | | |
|-------------|---------|---------------------------------|------------|---------|---------|
| | | UNLESS OTHERWISE SPECIFIED: | | NAME | DATE |
| | | DIMENSIONS ARE IN INCHES | DRAWN | RG & NB | 4/27/22 |
| | | TOLERANCES: | CHECKED | | |
| | | TWO PLACE DECIMAL ± 0.01 | ENG APPR. | | |
| | | THREE PLACE DECIMAL ± 0.001 | MFG APPR. | | |
| | | | Q.A. | | |
| | | | COMMENTS: | | |
| | | MATERIAL | 1020 Steel | | |
| | | FINISH | Machined | | |
| NEXT ASSY | USED ON | | | | |
| APPLICATION | | DO NOT SCALE DRAWING | | | |

| | | |
|------------|--------------|----------------|
| TITLE: | | |
| Center Arm | | |
| SIZE | DWG. NO. | REV |
| A | Drywall_Cart | 1 |
| SCALE: 1:8 | WEIGHT: | SHEET 38 OF 45 |



A

A

PROPRIETARY AND CONFIDENTIAL
 THE INFORMATION CONTAINED IN THIS DRAWING IS THE SOLE PROPERTY OF GYPSUM MANAGEMENT & SUPPLY. ANY REPRODUCTION IN PART OR AS A WHOLE WITHOUT THE WRITTEN PERMISSION OF GYPSUM MANAGEMENT & SUPPLY IS PROHIBITED.

| | | | | | |
|-------------|---------|-----------------------------|-----------------|---------|------|
| | | UNLESS OTHERWISE SPECIFIED: | | NAME | DATE |
| | | DIMENSIONS ARE IN INCHES | DRAWN | RG & NB | 3/15 |
| | | TOLERANCES: | CHECKED | | |
| | | TWO PLACE DECIMAL ±0.01 | ENG APPR. | | |
| | | THREE PLACE DECIMAL ±0.001 | MFG APPR. | | |
| | | | Q.A. | | |
| | | | COMMENTS: | | |
| | | MATERIAL | 0.75" 1020 Pipe | | |
| | | FINISH | Machined | | |
| NEXT ASSY | USED ON | | | | |
| APPLICATION | | DO NOT SCALE DRAWING | | | |

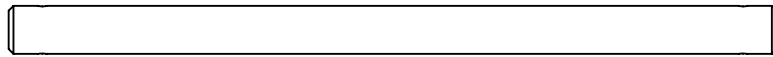
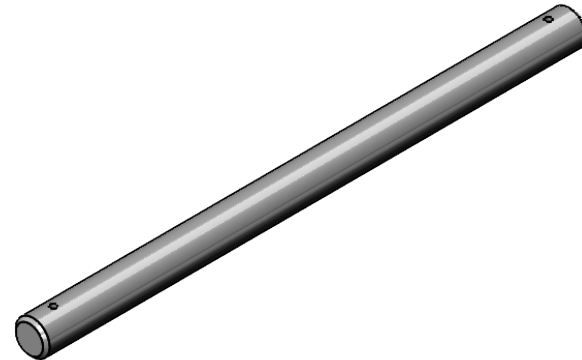
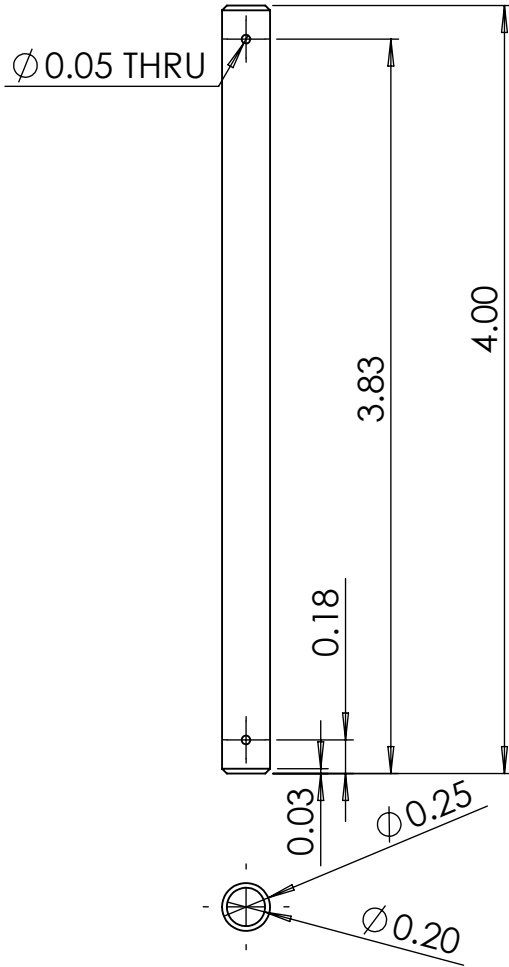
| | | |
|------------|--------------|----------------|
| TITLE: | | |
| Safety Arm | | |
| SIZE | DWG. NO. | REV |
| A | Drywall_Cart | 1 |
| SCALE: 1:8 | WEIGHT: | SHEET 39 OF 45 |

2

1

2

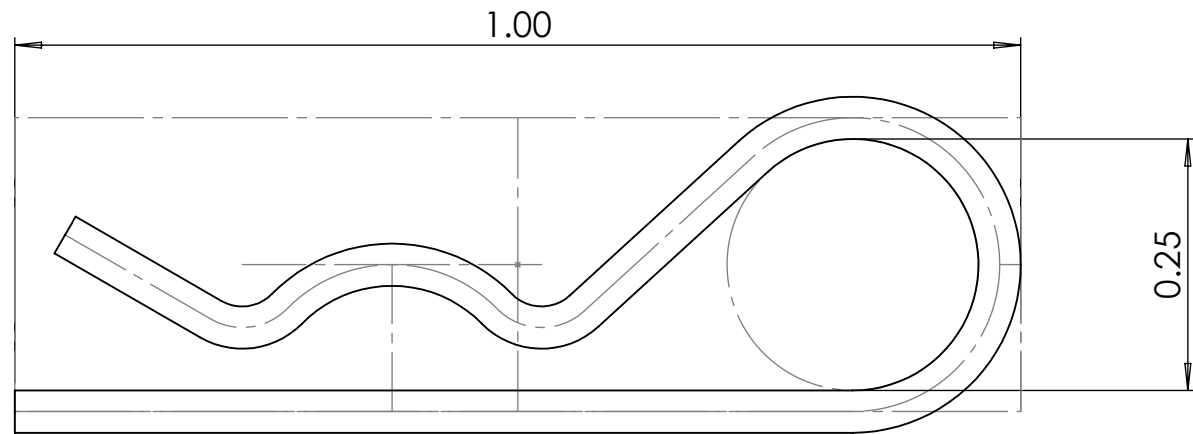
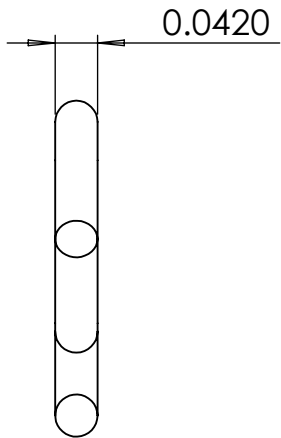
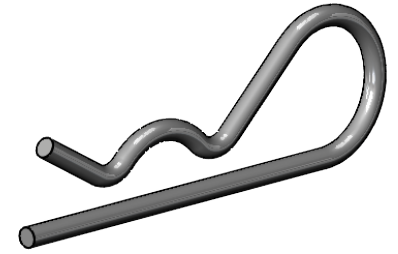
1




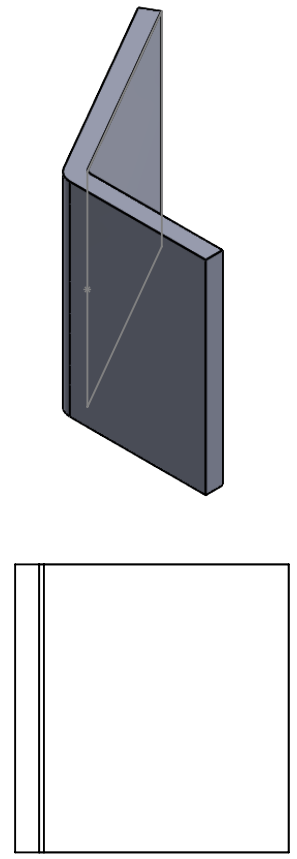
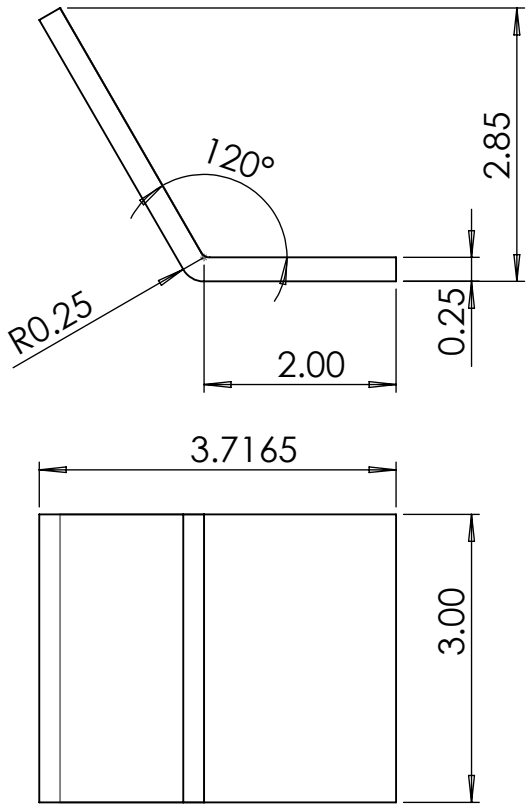
PROPRIETARY AND CONFIDENTIAL
 THE INFORMATION CONTAINED IN THIS DRAWING IS THE SOLE PROPERTY OF <INSERT COMPANY NAME HERE>. ANY REPRODUCTION IN PART OR AS A WHOLE WITHOUT THE WRITTEN PERMISSION OF <INSERT COMPANY NAME HERE> IS PROHIBITED.

| | | | | | |
|-------------|---------|-----------------------------|------------|---------|---------|
| | | UNLESS OTHERWISE SPECIFIED: | | NAME | DATE |
| | | DIMENSIONS ARE IN INCHES | DRAWN | RG & NB | 4/27/22 |
| | | TOLERANCES: | CHECKED | | |
| | | TWO PLACE DECIMAL ±0.01 | ENG APPR. | | |
| | | THREE PLACE DECIMAL ±0.001 | MFG APPR. | | |
| | | | Q.A. | | |
| | | | COMMENTS: | | |
| | | MATERIAL | 1020 Steel | | |
| | | FINISH | Machined | | |
| NEXT ASSY | USED ON | | | | |
| APPLICATION | | DO NOT SCALE DRAWING | | | |

| | | |
|------------|--------------|----------------|
| TITLE: | | |
| Dowel Pin | | |
| SIZE | DWG. NO. | REV |
| A | Drywall_Cart | 1 |
| SCALE: 1:1 | WEIGHT: | SHEET 40 OF 45 |



| | | |
|--|-------------|----------------|
| McMASTER-CARR  | PART NUMBER | Default |
| http://www.mcmaster.com | | |
| Information in this drawing is provided for reference only. | | |



B

B

A

A

PROPRIETARY AND CONFIDENTIAL
 THE INFORMATION CONTAINED IN THIS DRAWING IS THE SOLE PROPERTY OF GYPSUM MANAGEMENT & SUPPLY. ANY REPRODUCTION IN PART OR AS A WHOLE WITHOUT THE WRITTEN PERMISSION OF GYPSUM MANAGEMENT & SUPPLY IS PROHIBITED.

| | | | | | |
|-------------|---------|-----------------------------|-----------|---------|------|
| | | UNLESS OTHERWISE SPECIFIED: | | NAME | DATE |
| | | DIMENSIONS ARE IN INCHES | DRAWN | RG & NB | 3/15 |
| | | TOLERANCES: | CHECKED | | |
| | | TWO PLACE DECIMAL ±0.01 | ENG APPR. | | |
| | | THREE PLACE DECIMAL ±0.001 | MFG APPR. | | |
| | | | Q.A. | | |
| | | | COMMENTS: | | |
| | | MATERIAL | | | |
| | | 0.25" 1020 Sheet | | | |
| | | FINISH | | | |
| | | Machined | | | |
| NEXT ASSY | USED ON | | | | |
| APPLICATION | | DO NOT SCALE DRAWING | | | |

TITLE:
Top Hinge Plate

| | | |
|----------|--------------|-----|
| SIZE | DWG. NO. | REV |
| A | Drywall_Cart | |

SCALE: 1:2 WEIGHT: SHEET 42 OF 45

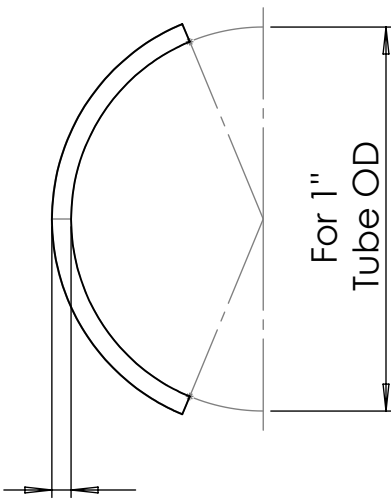
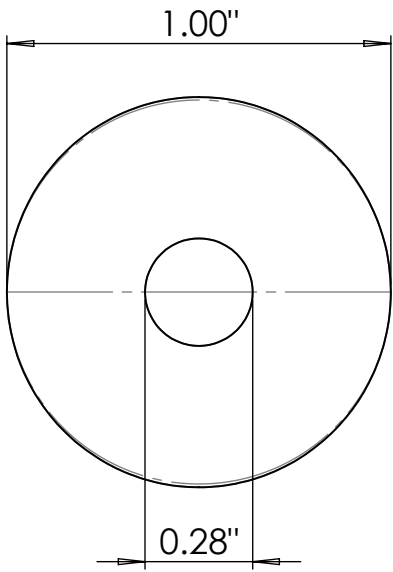
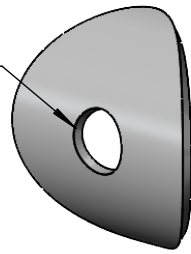
2

1


2

1

For 1/4"
Screw Size

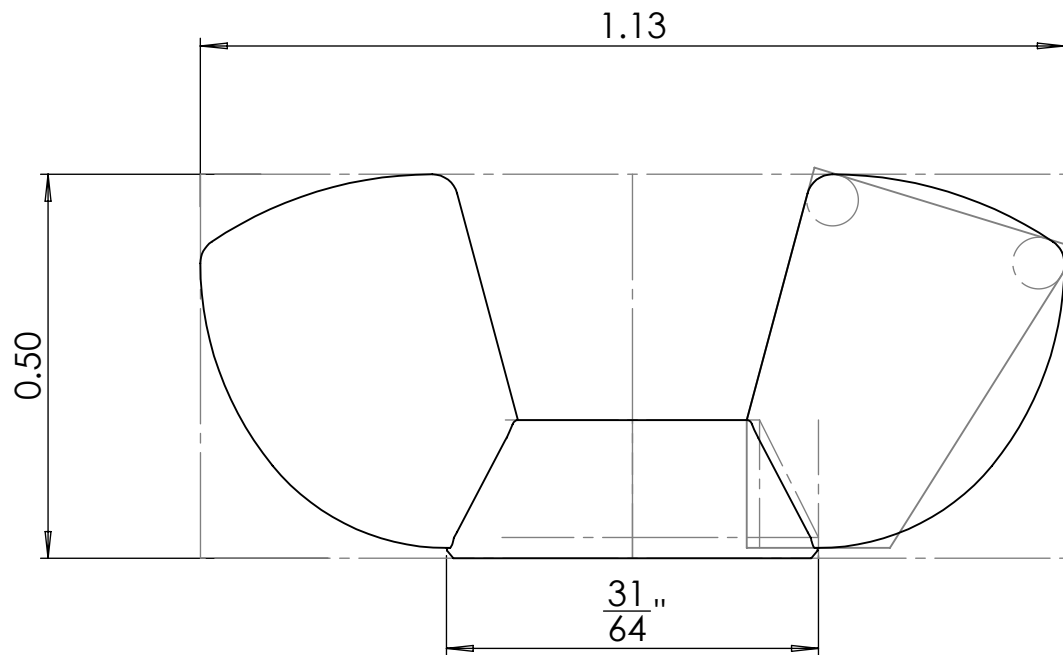
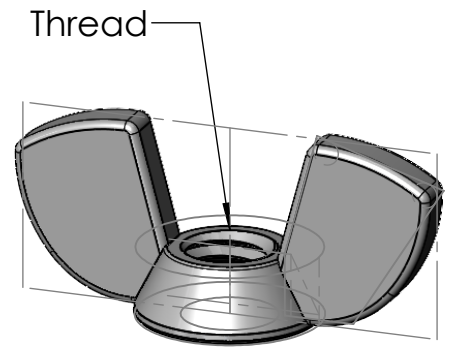



Washer may vary from
0.05" to 0.07" in thickness.

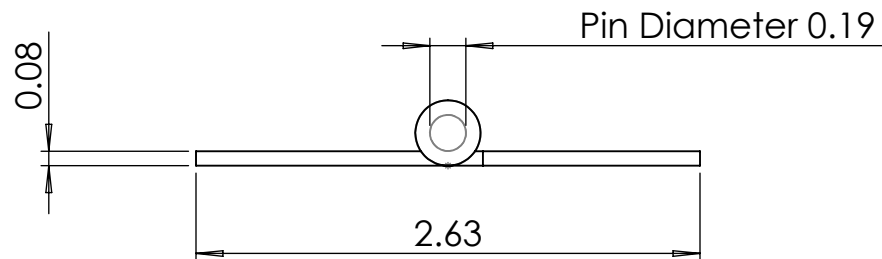
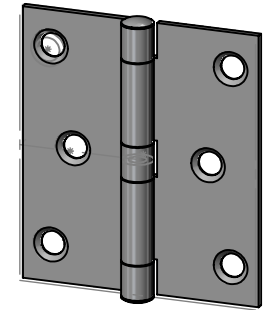
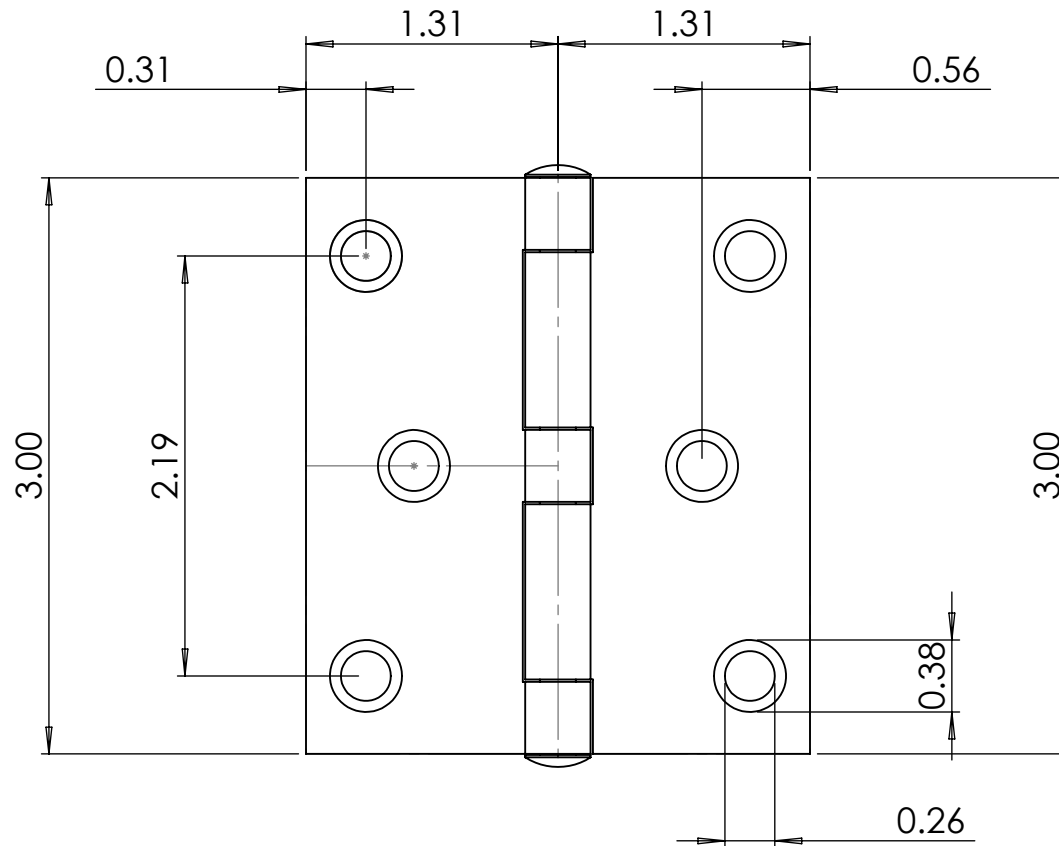
McMASTER-CARR  PART NUMBER **Default**

<http://www.mcmaster.com>

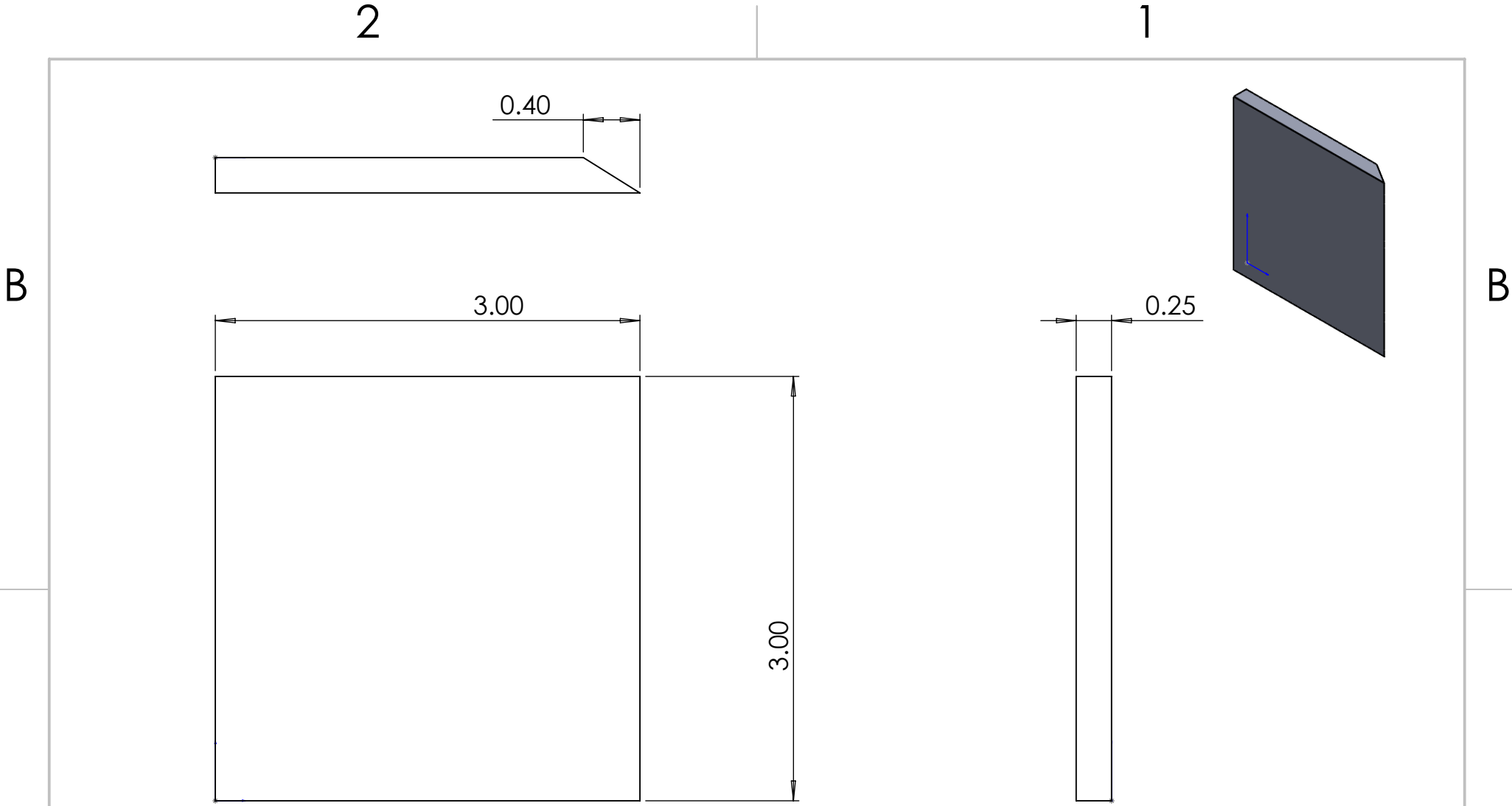
Information in this drawing is provided for reference only.



| | | |
|--|-------------|----------------|
| McMASTER-CARR  | PART NUMBER | Default |
| http://www.mcmaster.com | | |
| Information in this drawing is provided for reference only. | | |



| | | |
|---|---|----------------|
| McMASTER-CARR [↑] CAD _↙ http://www.mcmaster.com | PART NUMBER | Default |
| | Information in this drawing is provided for reference only. | |



A

A

| | | | | | | | | | | | |
|--|--|-------------|---------|-----------------------------|--|-----------|-----|------------|--------------|----------------------------------|--|
| <p>PROPRIETARY AND CONFIDENTIAL THE INFORMATION CONTAINED IN THIS DRAWING IS THE SOLE PROPERTY OF <INSERT COMPANY NAME HERE>. ANY REPRODUCTION IN PART OR AS A WHOLE WITHOUT THE WRITTEN PERMISSION OF <INSERT COMPANY NAME HERE> IS PROHIBITED.</p> | | | | UNLESS OTHERWISE SPECIFIED: | | | | | | | |
| | | | | DIMENSIONS ARE IN INCHES | | DRAWN | GMR | 4/27/22 | | | |
| | | | | TOLERANCES: | | CHECKED | | | | TITLE: <h1>Trigger Plate</h1> | |
| | | | | TWO PLACE DECIMAL ±0.01 | | ENG APPR. | | | | | |
| | | | | THREE PLACE DECIMAL ±0.001 | | MFG APPR. | | | | | |
| | | | | Q.A. | | | | | | | |
| | | | | MATERIAL | | COMMENTS: | | | | | |
| | | | | 1020 Stainless Steel | | | | | | | |
| | | | | FINISH | | | | | | | |
| | | | | Machined | | | | | | | |
| | | NEXT ASSY | USED ON | | | | | SIZE | DWG. NO. | REV | |
| | | | | | | | | A | Drywall_Cart | 1 | |
| | | APPLICATION | | DO NOT SCALE DRAWING | | | | SCALE: 1:1 | WEIGHT: | SHEET 46 OF 46 | |

2

1